

Accessibility Site Survey of Selected Items For Title 24 of the California Building Code



Watts Learning Center
310 W 95th Street
Los Angeles, CA 90003

Certificate of Occupancy: 8-Existing School

This report contains sample findings and is **NOT** intended to be a comprehensive site inspection and is **NOT** intended to be a complete report.

January 28, 2010



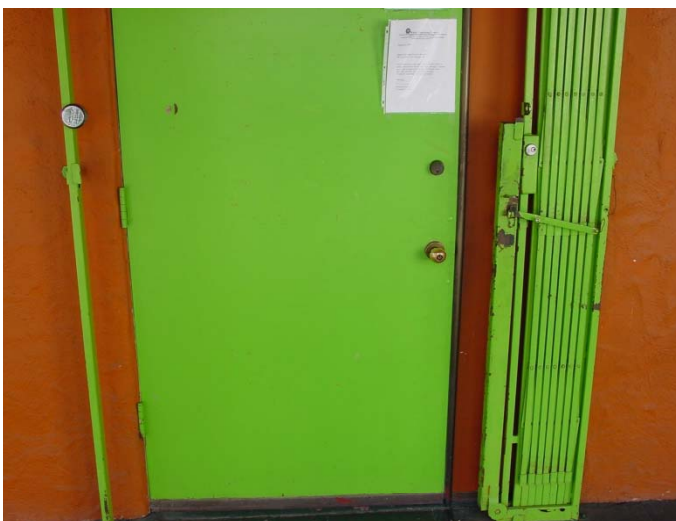
Main Entrance

Bottom 10 inches not smooth
No signage



Path of Travel

Open tree wells on path of travel to the office



Doors

No signage
Non-accessible hardware (round knob)



Door

Non-compliant threshold



Ramp

No handrail extension at top left



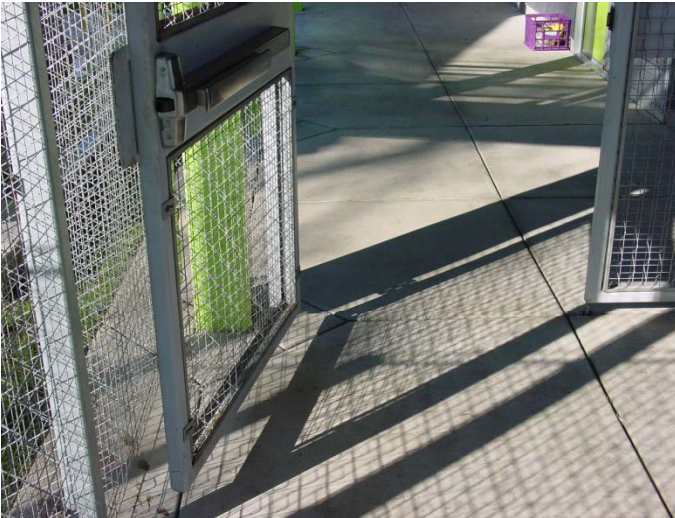
Ramp

Left handrail 4 inches from side wall



Ramp

Cut handrail-1st run top right



Gate

Bottom 10 inches not smooth
No signage



Ramp

Ramp top run slope of 9.3% (exceeds 8.33%)



Ramp

Bottom handrail extension does not continue in the direction of travel



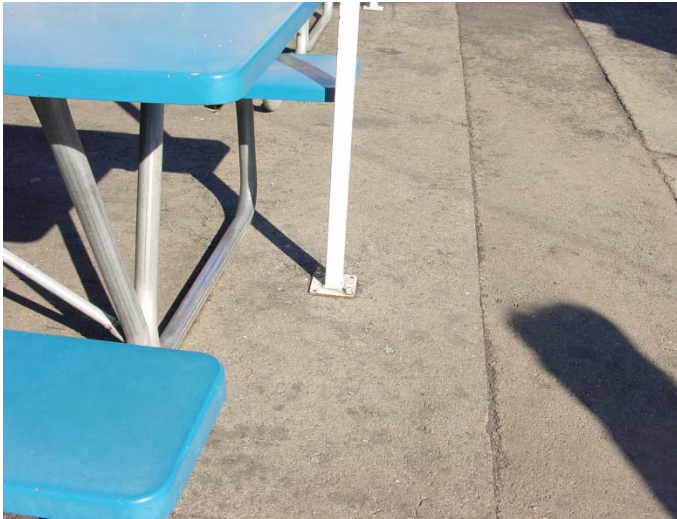
Ramp

No 12 inch handrail extension



Signage

No contrast on gender door signs



Outdoor Dining

Tables not accessible by design



Ramp

Ramp to parking has no edge protection on left side



Parking

No truncated domes at head of access aisle
Van access aisle not wide enough



Ramp

No edge protection on left side



Ramp to parking has cross slope greater than 2%