

Accessibility Site Survey of Selected Items
For
Title 24 of the California Building Code



Lou Dantzler Prep Charter Middle School
5029 South Vermont Avenue
Los Angeles, CA 90037

Certificate of Occupancy: 7-Change of Use

This report contains sample findings and is **NOT** intended to be a comprehensive site inspection and is **NOT** intended to be a complete report.

January 25, 2010



Drinking Fountain

Change in elevation to drinking fountain



Signage

Signage not on latch side



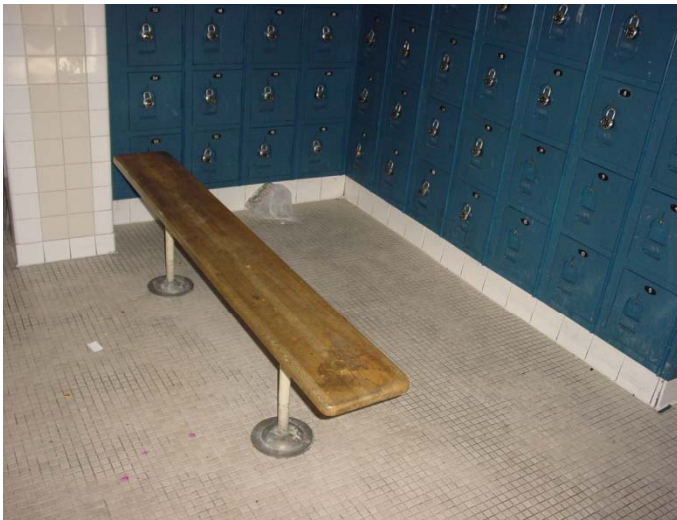
Doors

Threshold greater than a beveled ½ inch



Shower

Shower not 42 inches wide
Controls opposite seat



Locker Room

No accessible bench or lockers



Auditorium

No compliant fixed seats
Wheel chair seating areas not identified with ISA



Path of Travel

Non-compliant threshold



Shower

Handrail over seat



Dining Area

No accessible seating by design



Ramps

Less than required with at classrooms 1 and 2

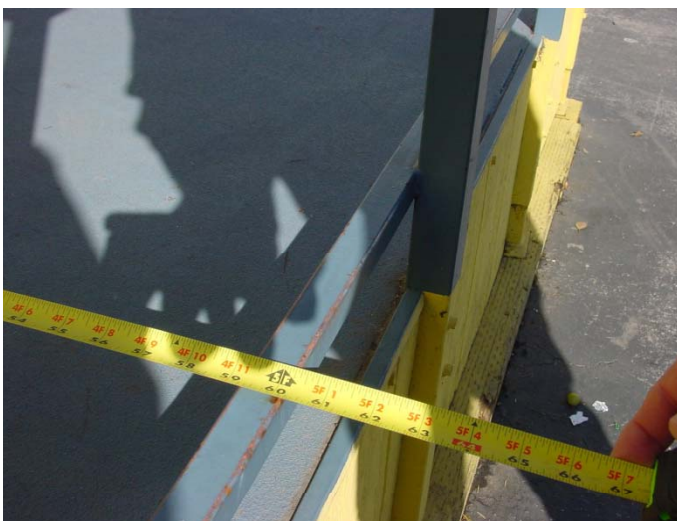


Ramps

No bottom 12 inch handrail extensions

No 60 inch top landing

Asphalt built up at bottom of ramp



Ramp

No 60 inch top landing



Protruding Object

Air conditioning unit is a protruding object in the path of travel



Ramps

Non-compliant ramps to classrooms 3 and 4



Signage

No signage



Parking by Portable 5

- Not outlined on left
- No 12 inch high no parking
- ISA is greater than 36" by 36"
- No \$250 fine



Ramp

- No level landing
- Non-accessible ramp



Path of Travel

- No crosswalk to sports arena



Tables

No accessible tables at sports areas



Main Entrance to Office

Main entrance is stairs access only down stairs

No signage



Main Entrance

Office located down stairs



Main Entrance to Boys and Girls Club

No signage

No ISA

Threshold greater than a beveled ½ inch



Entrance

Non-compliant threshold at entrance



Path of Travel

Lobby slopes greater than 5%



Door

Door to office in basement
No Signage



Path of Travel

Stair access only to office and two classrooms
downstairs
No vertical access