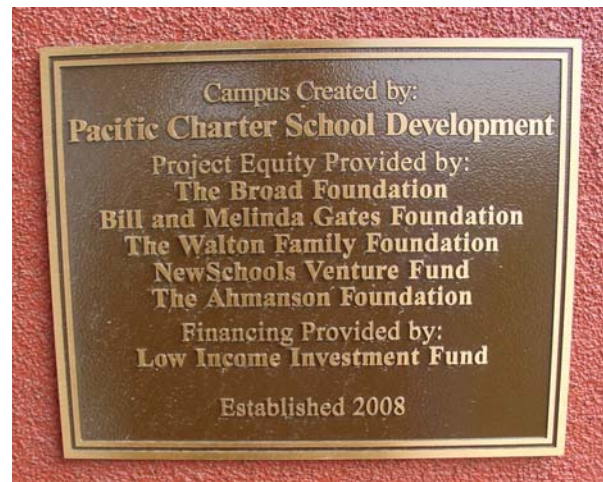


Accessibility Site Survey of Selected Items For Title 24 of the California Building Code



Lakeview Charter Academy
11465 Kagel Canyon Street, Lakeview Terrace, CA 91342

Community Charter Middle School
Community Charter Early College High School
11500 Eldridge Avenue, Lakeview Terrace, CA 91342

Certificate of Occupancy: 6-New School and 7-Change of Use

This report contains sample findings and is **NOT** intended to be a comprehensive site inspection and is **NOT** intended to be a complete report.

January 25, 2010



Lavatory

Pipes should be wrapped under all lavatories in new construction



Clear Width

No 44 inches of clear with to girl's standard accessible toilet compartment



Elevator

No Title 19 Signage



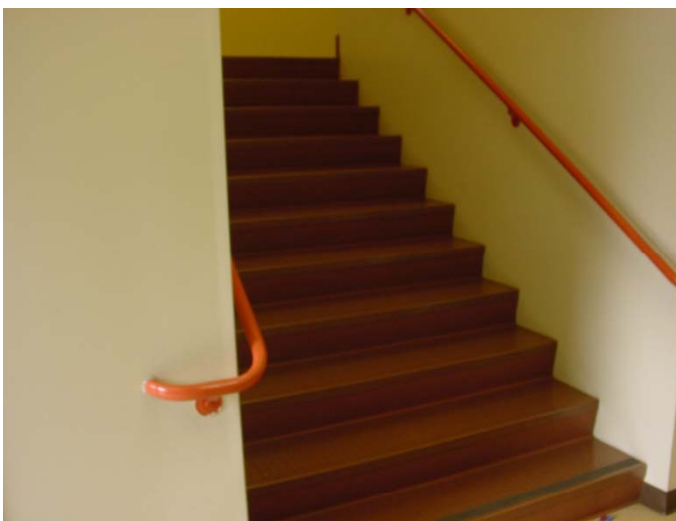
Visual Alarms

Not in all common areas



Signage

No signage at main entrance



Stairs

Lobby stairs do not extend 12 inches in the direction of travel



Gate from Public Right of Way

Bottom 10 inches not smooth

No 18 inches of latch side clearance from the pull side



Protruding Object

Control for platform lift is a protruding object



Crosswalk

No truncated domes at the crosswalk from the public right of way



Platform Lift

No 18 inches of latch side clearance



Platform Lift

No level landing



Platform Lift

No light in cab



Multi-Purpose Room

No signage



Visual Alarms

Not in all common areas



Lunch Area

Tables not accessible by design



Passenger Loading Zone

- No signage
- No striping
- No curb ramp



Main Entrance to High School

- No truncated domes



Parking

- Spaces have slopes greater than 2 %
- All ISA pavement symbols are greater than 36 inches



Main Entrance Parking

No parking warning signage
No \$250 fine sign



Parking

ISA greater than 36 " by 36"
No van signage



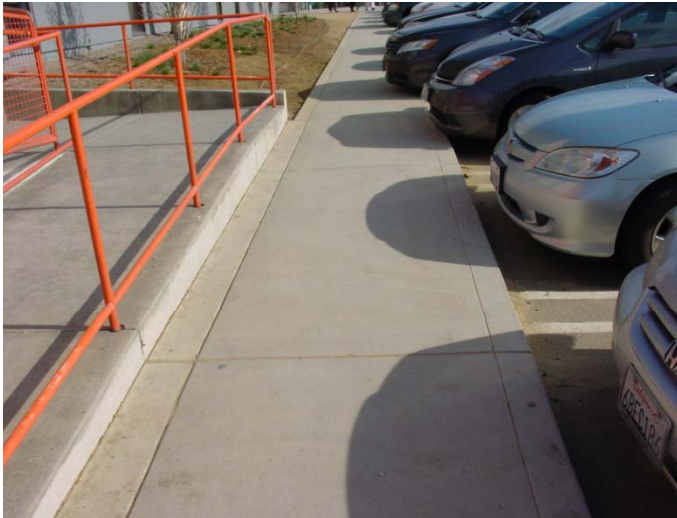
Parking

ISA greater than 36" by 36"



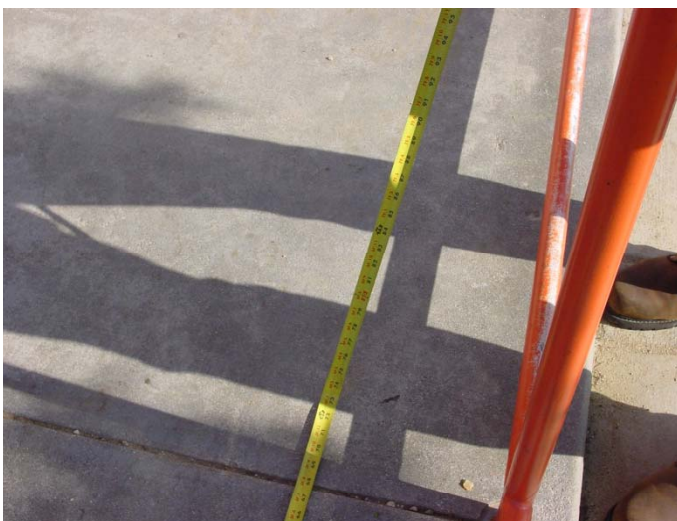
Parking

Accessible parking is not on the shortest route to the middle school entrance



Path of Travel

No wheel stops



Ramp to Middle School Entrance

No 72 inch bottom landing



Ramp

No 72 inch intermediate landing



Ramp

No 72 inch intermediate landing



Handrail

Does not extend in the direction of travel



Stairs

No striping
Top left handrail does not have 12 inch extensions



Handrail

Right handrail does not have 12 inch extension



Elevator in Lobby

No Title 19 emergency signage



Elevator

Signage does not have Braille located below the raised number



Unisex Restroom on First Floor

Does not have 42 inches on the side of the water closet



Signage

No compliant latch side signage



Restroom Door

Swings into required clear floor space



Drinking Fountain

No 27 inches of knee clearance
Not in an alcove and therefore low side is a protruding object



Doors

Double leaf hall fire doors only 78 inches to closer and only 79 inches in door height



Lakeview Charter Academy

Note: Lakeview Charter Academy, Community Charter Middle School and Community Charter Early College High School are all on the same campus and share some facilities, such as the multi-purpose room



Main Entrance

No signage



Drinking Fountains in Multi-Purpose

No bollards
Not in alcove
(Next to vending machine)



Water Closet

Center line is 20 inches instead of the required 18 inches



Platform Lift

Not in a pit
No 18 inch latch side clearance from the pull side



Lavatory

Pipes not wrapped



Lavatory

No 29 inch knee clearance



Restroom

Water closet is in front of the stall door and is required to be adjacent