

**Accessibility Site Survey of Selected Items
For
Title 24 of the California Building Code**

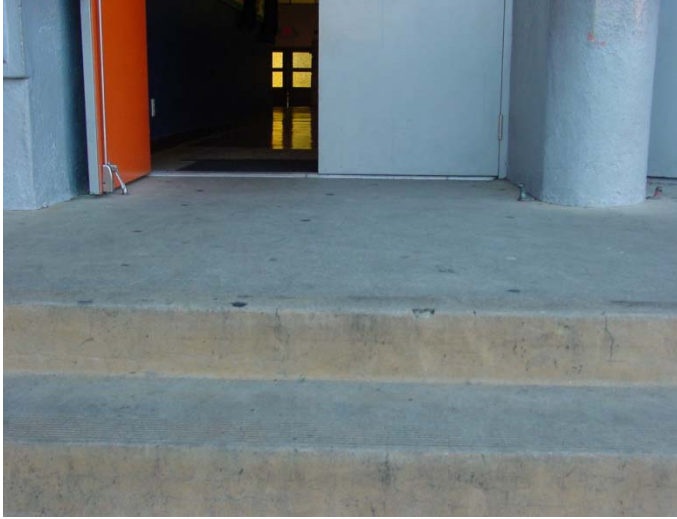


Kipp Academy of Opportunity
7019 South Van Ness Avenue
Los Angeles, CA 90043

Certificate of Occupancy: 8-Existing School

This report contains sample findings and is **NOT** intended to be a comprehensive site inspection and is **NOT** intended to be a complete report.

January 27, 2010



Main Entrance

Stair access only
No handrails on stairs
Bottom 10 inches of the door not smooth due to door stop



Path of Travel

Path of travel from the public right of way does not have an accessible route
No signage from the public right of way



Path of Travel

Change in elevation exceeds 3 inches



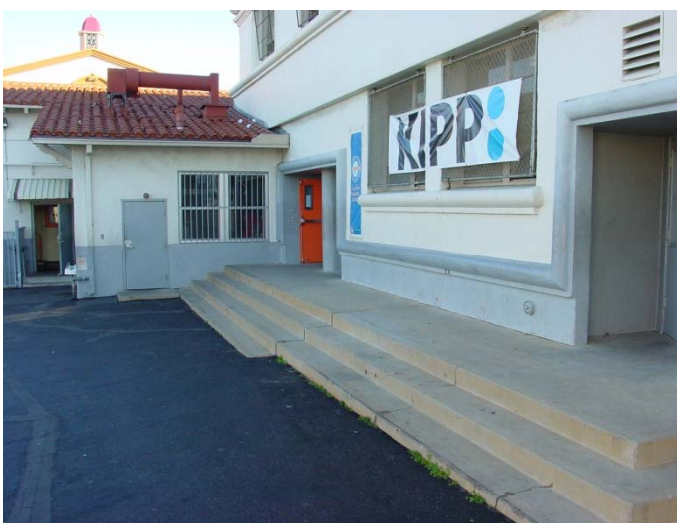
Path of Travel

No accessible route
Dirt and grass



Path of Travel

Change in elevation exceeds 2 inches



Path of Travel

No accessible route to school entrance



Drinking Fountains

No accessible drinking fountains in school



Door to Main Entrance

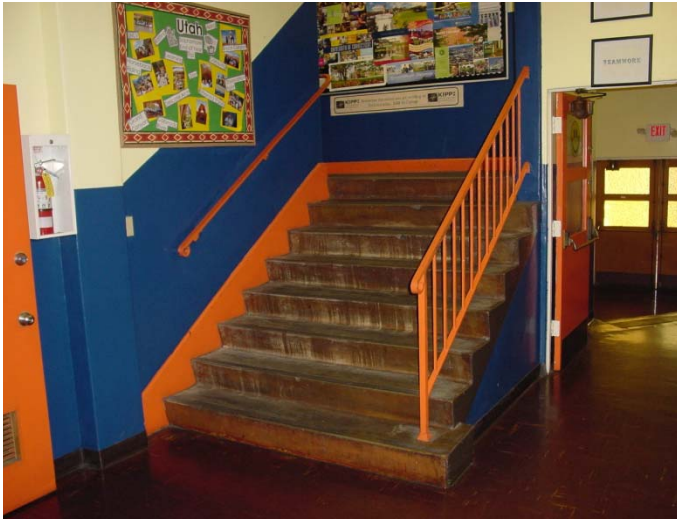
No signage

Bottom 10 inches of the door not smooth due to door stop



Doors

Door closures too low



Stairs

Handrails not compliant
No handrail extensions



Drinking Fountain

Change in elevation to drinking fountain



Signage

Signage to newly remodeled restroom does not have a contrast of the triangle and circle



Restroom

Pipes not wrapped at newly remodeled accessible restroom



Restroom

Soap and towel dispenser in newly remodeled restroom have a height greater than 40 inches



Restroom

Grab bars in newly remodeled restroom are at 38 1/2 inches instead of 33 inches



Path of Travel

Stair access between office level and computer lab



Path of Travel

Stair only access to the stage in the multi-purpose room
No vertical access



Dining Area

No accessible seating in the multi-purpose room
Tray slide higher than 34 inches