

Accessibility Site Survey of Selected Items For Title 24 of the California Building Code



ICEF Vista Elementary Academy
4471 Inglewood Boulevard
Los Angeles, CA 90066

Certificate of Occupancy: 8-Existing School

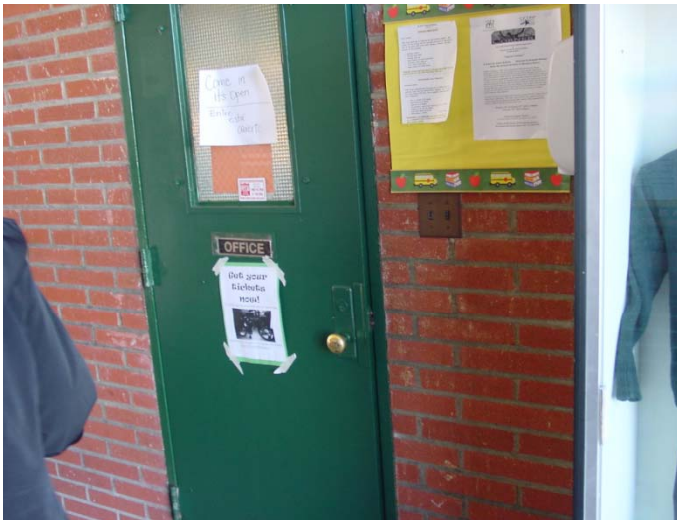
This report contains sample findings and is **NOT** intended to be a comprehensive site inspection and is **NOT** intended to be a complete report.

January 27, 2010



Main Entrance

Step to main entrance



Main Office

No signage

Non-accessible hardware



Door

Typical non-compliant door thresholds

No signage

Non-accessible door hardware



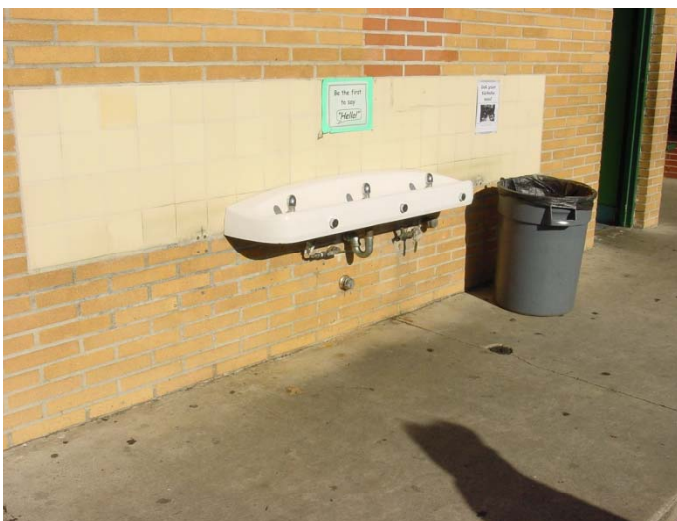
Door

Door not wide enough
Non-accessible hardware



Path of Travel

No accessible route to school



Drinking Fountains

No compliant drinking fountains in the school



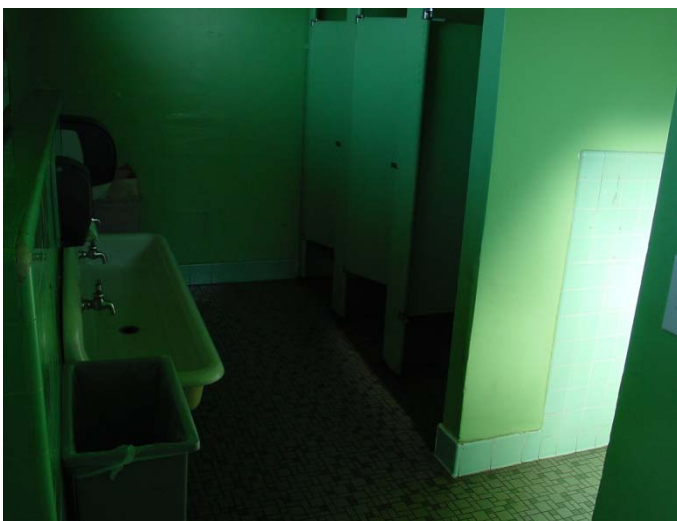
Path of Travel

Non-accessible path of travel (some areas in the primary path of travel exceed 8%)



Restroom

Door to girl's restroom too narrow
No level landing
Non-compliant door stop
No signage



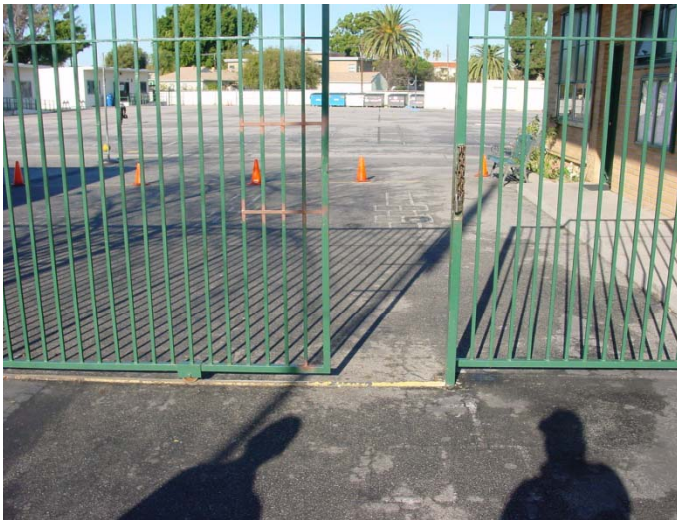
Restroom

Door too narrow
Non-accessible signage
No accessible compartment



Outdoor Dining

No accessible seating



Path of Travel

No single gate

Non-compliant sliding gate

Rail for gate creates non-accessible path of travel



Ramp

Non-compliant ramp

Handrail extensions do not return to parallel due to asphalt bult up