

Accessibility Site Survey of Selected Items For Title 24 of the California Building Code



Discovery Charter Prep
12550 Van Nuys Boulevard
Pacoima, CA 91311

Certificate of Occupancy: 6-New School and 7-Change of Use

This report contains sample findings and is **NOT** intended to be a comprehensive site inspection and is **NOT** intended to be a complete report.

January 26, 2010

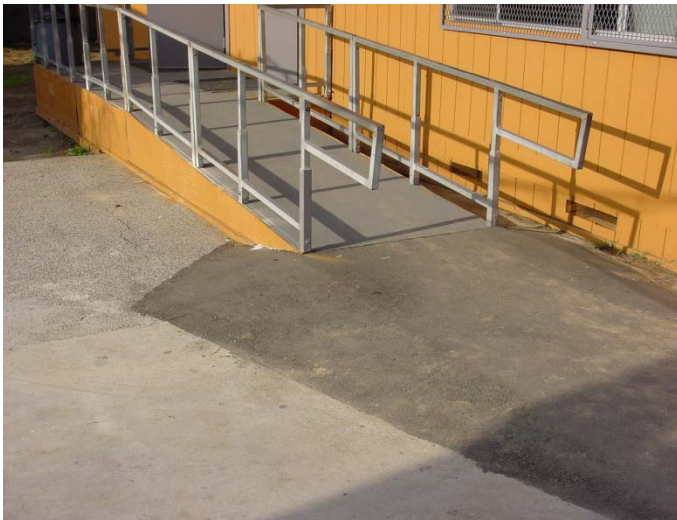


Path of Travel

Path of travel from the public right of way lacks directional signage

Bottom 10 inches of gate not smooth

No accessible hardware



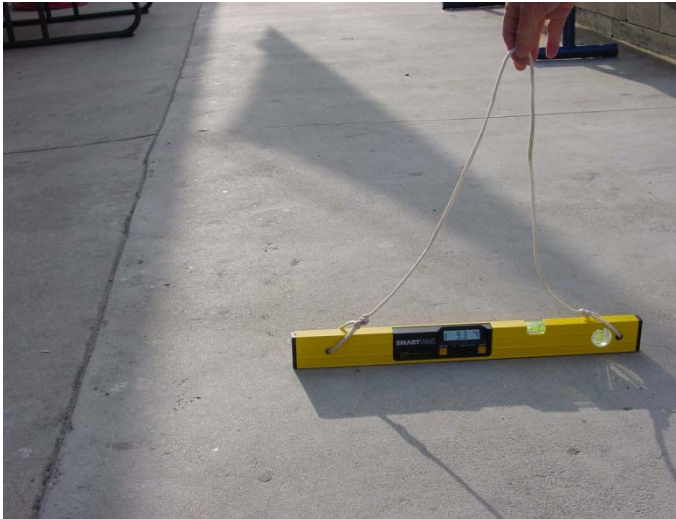
Ramp

Handrails do have 12 inch extensions due to asphalt built-up



Path of Travel

Path of travel to A Building has a slope greater than 12%



Path of Travel

Sidewalk next to Building A has cross slopes greater than 8% (2% maximum allowed)



Doors

Entrance to classrooms have no level landings



Ramps

Handrails at top and bottom of ramp between Building A and Building B do not extend 12 inches



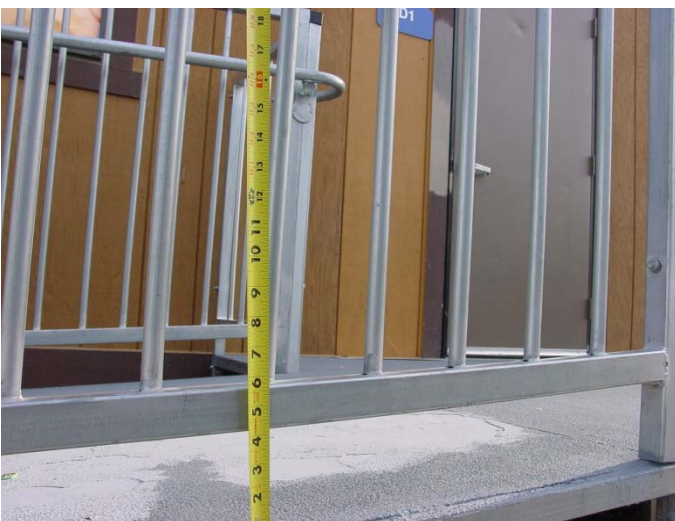
Ramp

Slope exceeds 8.33%



Ramp

Ramp to Portable D-1 have non-compliant handrails



Ramp

Edge protection mounted greater than a maximum of 4 inches



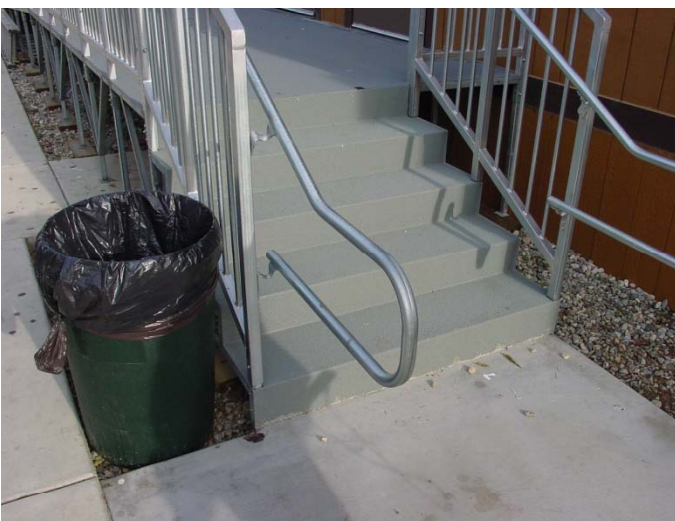
Ramp

No 12 inch left top handrail extension



Ramp

Top right handrail extension does not return to parallel



Stairs

Stairs to D-1 do not have striping on each tread



Ramp

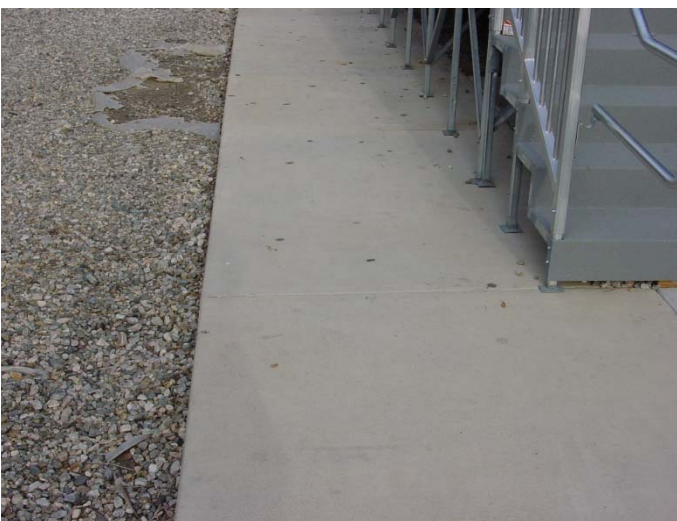
Tripping hazard

Handrails do not return to parallel



Path of Travel

Tripping hazard



Path of Travel

Placement of ramp on the sidewalk reduces the width to less than 48 inches



Door

Typical non-compliant classroom door entrance



Door

Only 7 inches of latch side clearance from the push side (12 inches required)



Drinking Fountains

Drinking fountain not accessible
Area to use drinking fountain not level



Door

Latch side clearance of 7 $\frac{1}{4}$ inches from the push side (12 inches required)