

**Accessibility Site Survey of Selected Items  
For  
Title 24 of the California Building Code**



**Crescendo Charter School/Conservatory**  
4900 South Western Avenue  
Los Angeles, CA 90062

Certificate of Occupancy: 8-Existing School

This report contains sample findings and is **NOT** intended to be a comprehensive site inspection and is **NOT** intended to be a complete report.

January 27, 2010



### **Restroom**

- No signage
- Door swings in
- No 60 inches of clear space



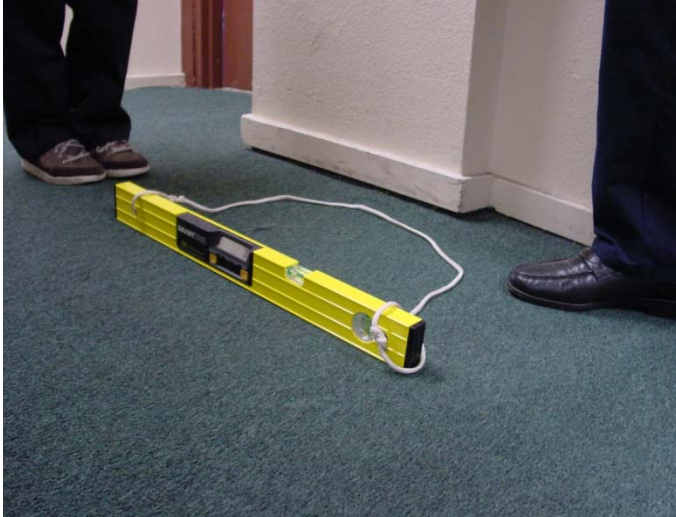
### **Restroom**

- Non-compliant grab bars
- No 60 inch turning radius



### **Restroom**

- Soap, mirrors and paper towels too high
- No 60 inch turning radius



### Path of Travel

7% slope outside of classroom



### Signage

No contrast of triangle and circle on unisex gender symbol



### Restroom

Adult standards

Grab bar greater than 12 inches from the wall

No 60 inches

Door swings into clear floor space



### **Path of Travel**

Interior ramp too steep  
Non-compliant handrails  
Non-compliant landing



### **Doors**

Beveled  $\frac{3}{4}$  inch threshold  
Bottom 10 inch not smooth from the push side of the door  
No 80 inch door height



### **Stage**

No vertical access to stage



## Restroom

Non-compliant restroom

Children's and adult standards mixed

Mirror, paper towel and soap too high



## Doors

Non-compliant signage (typical throughout)



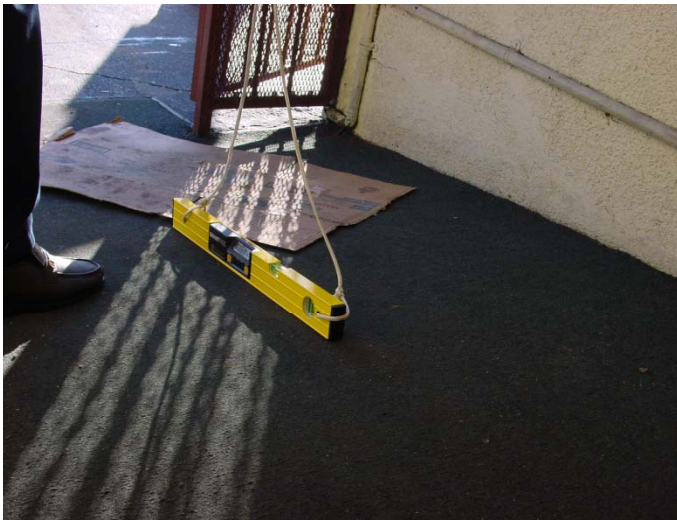
## Restroom

Toilet paper dispenser interferes with use of side grab bar



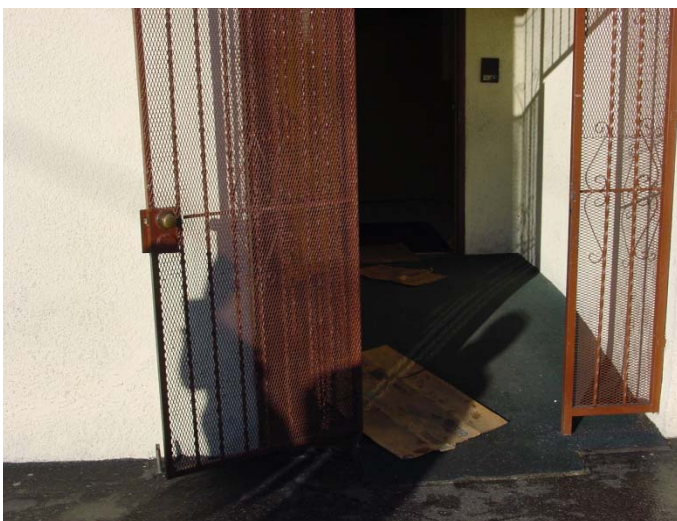
### **Drinking Fountain**

Drinking fountain is a protruding object



### **Path of Travel**

Main entrance does not have a level landing



### **Path of Travel**

Main entrance has no signage  
Non-compliant hardware  
No level landing



### **Path of Travel**

No accessible route from the public right of way



### **Parking**

No warning signage

No parking signage

No head aisle