

Accessibility Site Survey of Selected Items For Title 24 of the California Building Code



Cornerstone Preparatory
7651 South Central Avenue
Los Angeles, CA 90001

Certificate of Occupancy: 7-Change of Use

This report contains sample findings and is **NOT** intended to be a comprehensive site inspection and is **NOT** intended to be a complete report.

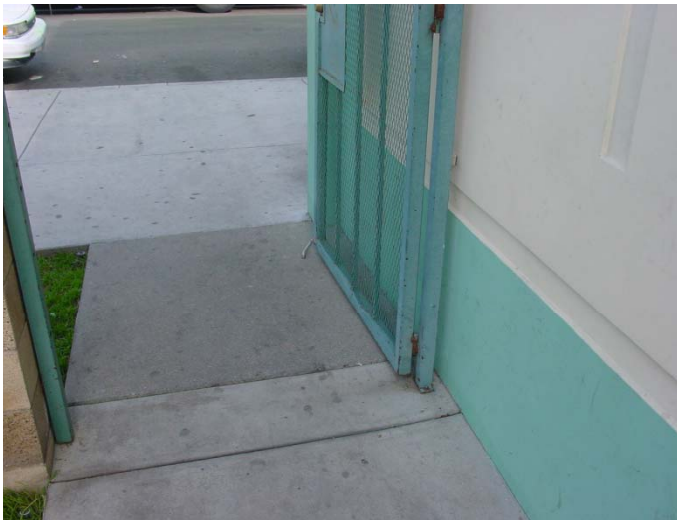
December 17, 2009



Gate

No signage

Does not have enough latch side clearance



Gate

Bottom 10 inches of entrance gate not smooth

Hardware not accessible



Path of Travel

Open tree wells



Main Entrance

No signage to main entrance of Cornerstone Prep



Parking

Non-compliant parking



Parking

Non-compliant parking
Faded striping



Parking

Non-compliant parking
Tables block path of travel
ISA not 36 inches by 36 inches



Parking

Van access aisle only 92 inches
Standard access aisle only 56 ½ inches



Tables

Tables not compliant by design
Tables block head access aisle



Platform Lift

Platform lift not compliant



Signage

Non-compliant signage



Signage

Signage on door not compliant due to lack of contrast of sign and door



Gymnasium

No accessible seating



Restroom

Pipes not wrapped
Only 26 inches of knee clearance



Dining Area

Tables not accessible by design