

**Accessibility Site Survey of Selected Items
For
Title 24 of the California Building Code**



**Animo Film and Theater Arts
3801 South Broadway
Los Angeles, CA 90011**

Certificate of Occupancy: 7-Change of Use

This report contains sample findings and is **NOT** intended to be a comprehensive site inspection and is **NOT** intended to be a complete report.

January 25, 2010



Main Entrance



Main Entrance

No signage
No level landing



Counter at Main Entrance

Counter too high (43 inches instead of 36 inches)



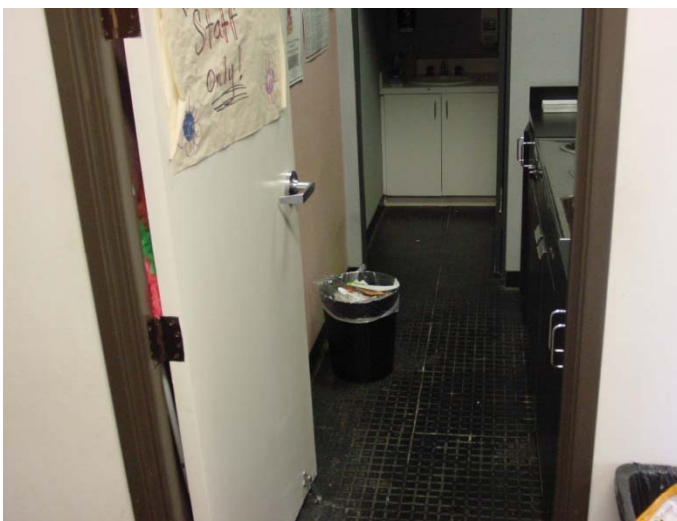
Protruding Object

Fire pull at main entrance is a protruding object



Protruding Object

Counter at main office is a protruding object



Staff Break Room and Staff Unisex

No signage

No 18 inch latch side clearance from pull side



Staff Unisex

No accessible features



Staff Break Room

Non-accessible sink
No 60 inch clear floor space
Door stop



Protruding Object

Fire bottle is a protruding object



Health and Safety



Parking

- Space not 108 wide
- Space not 216 long
- No 96 inch van space access aisle
- No 36" by 36" ISA
- No 12 inch high parking
- No \$250 fine sign



Signage

- Warning sign not filled in



Signage

No signage at classrooms

Door stop (bottom 10 inches of the door not smooth)