

Accessibility Site Survey of Selected Items For Title 24 of the California Building Code

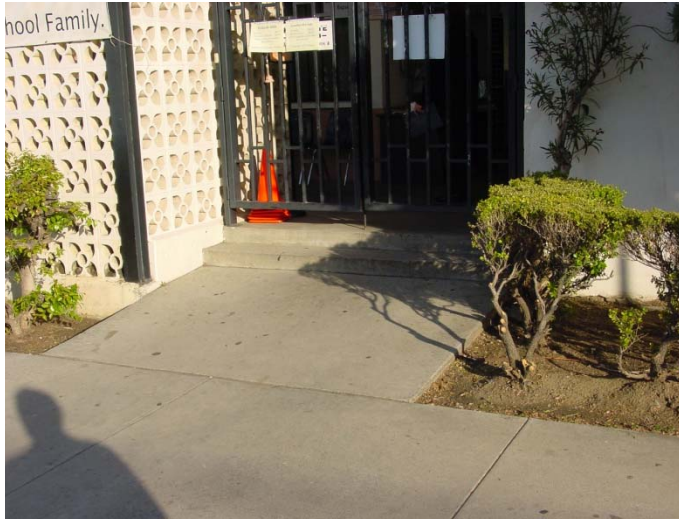


Accelerated Charter Elementary School
119 East 37th Street
Los Angeles, Ca 90011

Certificate of Occupancy: 8-Existing School

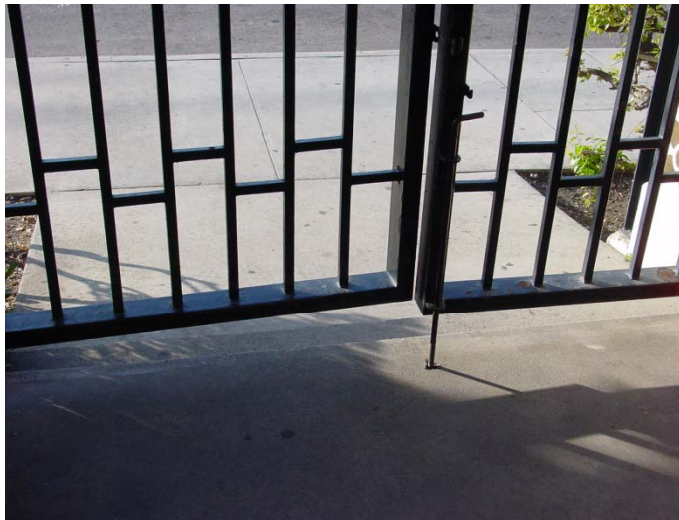
This report contains sample findings and is **NOT** intended to be a comprehensive site inspection and is **NOT** intended to be a complete report.

January 25, 2010



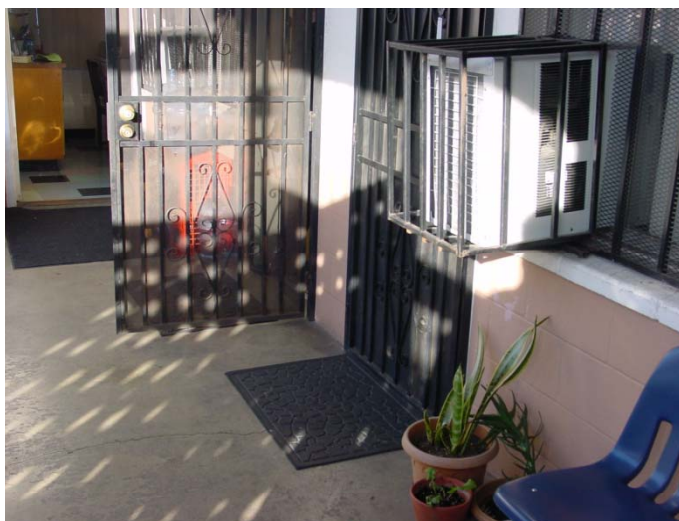
Main Entrance

Stair access only to main entrance and school
No handrails on stairs
No striping on stairs



Gate at Main Entrance

Bottom 10 inches not smooth
No accessible hardware



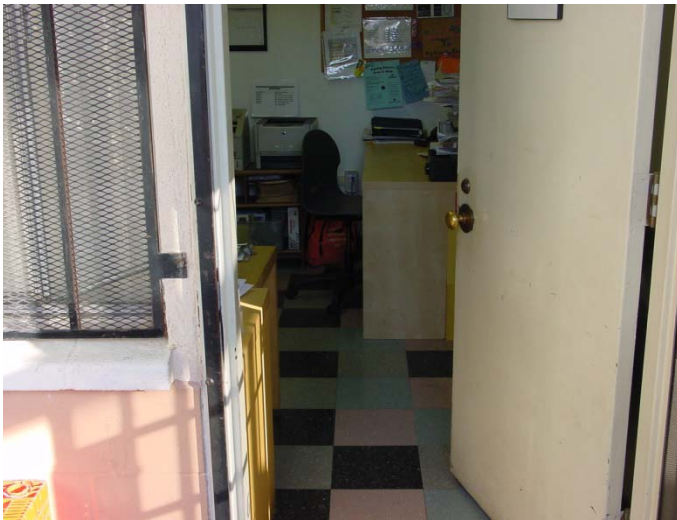
Hardware and Protruding Object

Non-accessible door hardware (round knob)
Air conditioning unit is a protruding object



Dining Area

Non-accessible by design



Office and Break Room

Non-accessible hardware (round knob)

No signage

Less than 32 inches



Staff Unisex Restroom

No signage

No accessible features



Ramp

- Non-compliant ramp
- No handrail on right
- No level landing



Girl's Restroom at Main Entrance

- No accessible features



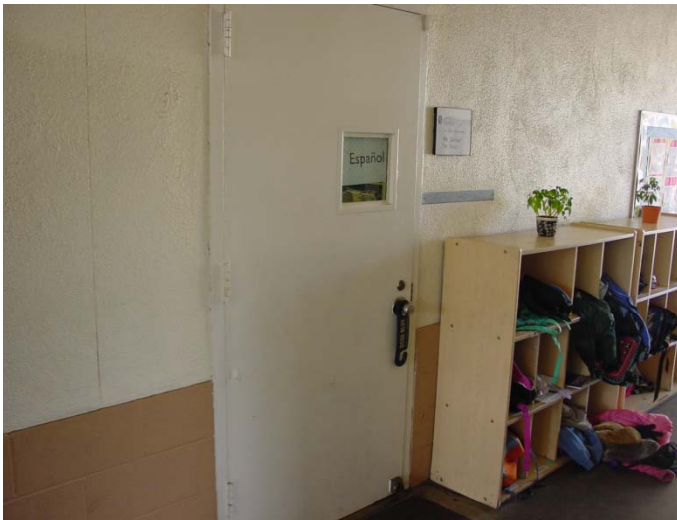
Restrooms

- No accessible staff or student restrooms



Drinking Fountains and Signage

- No compliant drinking fountains
- No signage at classrooms
- Non-accessible door hardware



Door Hardware at Classrooms

- Non-accessible hardware