

Site Survey of Selected Items  
for  
Compliance with the Americans with Disabilities Act  
(ADAAG)  
and  
Title 24 of the CBC



This report identifies noncompliant items in remodeling and renovation at an existing school site and provides recommended methods for removal of the barriers identified.

The site survey of Pacoima Middle School was conducted on December 1, 2006 during a spot check for compliance with the Americans with Disabilities Act Guidelines (ADAAG) and Title 24 of the CBC

This report is not intended to be a complete inspection of the facility.

# Facility Name: Pacoima Middle School

## Programs, Services, and Activities

**Finding:** Pacoima Middle School is located at 9919 Laurel Canyon Boulevard in Pacoima California. The facility was inspected by Disability Access Consultants, Inc., on December 1, 2006. This is a report of selected items and is not intended as a full report.

**Alternative Rec:** \*  
(Where Available)



**Full Rec** Any renovation or new construction that occurred after January 26, 1992, is subject to meet full code specifications for the California Building Code and ADAAG requirements. All recommendations in this report are based on ADAAG and CBC title 24 requirements. Consult with your design professional to determine which elements are affected by these requirements. It is recommended that Disability Access Consultants, Inc. is consulted for inspection of any new construction or renovation at the facility.

Citation: ADAAG 4.1.2; ADAAG 4.1.3; ADAAG 4.1.5; ADAAG 4.1.6

Minimum Quantity: 1  
Maximum Quantity: 1  
Unit: None Selected  
Minimum Estimated Cost: 0  
**Maximum Estimated Cost: 0**  
Record Number 128  
Priority:

## Parking

**Finding:** The location of the accessible parking spaces require individuals with disabilities to travel behind parked cars other than their own.

**Alternative Rec:** \*  
(Where Available)



Accessible Parking Next to Room 3

**Full Rec** Stripe a 48-inch access aisle at the head of the accessible parking spaces and at the general parking spaces. Install a wheelstop at the head of the accessible parking spaces and at the general parking spaces. Wheelstops shall be used to prevent vehicles from encroaching into access aisles or walkways, but shall not present addition encroachment into those areas (see CBC 1129B.4.3). Install a 36 inch wide detectable warning surface at the sidewalk entrance to each access aisle.

Citation: CBC 1129B.4.3

Minimum Quantity: 1  
Maximum Quantity: 1  
Unit: Each  
Minimum Estimated Cost: 100  
**Maximum Estimated Cost: 100**  
Record Number 151  
Priority:

# Facility Name: Pacoima Middle School

## Parking

**Finding:** The bottom edge of the post-mounted signage designating the accessible parking space on the right is 79 1/4 inches above the level of the parking space and cannot be viewed when a vehicle is parked in the space. The sign next to the left accessible space contains the word "Handicapped."

**Alternative Rec:** \*  
(Where Available)



Accessible Parking Next to Room 3

Citation: CBC 1129B.5; ADAAG 4.6.4

Minimum Quantity:	1
Maximum Quantity:	1
Unit:	Each
Minimum Estimated Cost:	150
<b>Maximum Estimated Cost:</b>	<b>150</b>
Record Number	152
Priority:	

**Full Rec** Modify the height or replace the post-mounted signage designating the accessible parking space to provide at least 80 inches from the parking space finished grade to the bottom edge of the sign. The sign shall be located so that it cannot be obscured by a vehicle parked in the space (see CBC 1129B.5). Remove the signage containing the word "Handicapped."

## Parking

**Finding:** There is one accessible parking space out of seven parking spaces marked, which is sufficient for compliance. The access aisle, located on the passenger's side (right side) of the parking space, measures 94 inches wide. The parking space is not "van-accessible".

**Alternative Rec:** \*  
(Where Available)



Accessible Parking Next to Room 90

Citation: CBC 1129B; ADAAG 4.6; ADAAG A4.6.

Minimum Quantity:	1
Maximum Quantity:	1
Unit:	Each
Minimum Estimated Cost:	270
<b>Maximum Estimated Cost:</b>	<b>270</b>
Record Number	186
Priority:	

**Full Rec** One out of the seven total number of marked parking spaces meets the number required to be designated exclusively for accessible parking, according to ADAAG and CBC 1129B. Restripe the existing parking space marked accessible to create one van-accessible parking space measuring at least 108 inches wide and 216 inches long with an access aisle measuring at least 96 inches wide located on the passenger side (right side) of the parking space. Add the words NO PARKING in 12 inch high white letters at the entrance to the accessible parking access aisle.

# Facility Name: Pacoima Middle School

## Parking

**Finding:** The location of the accessible parking space requires individuals with disabilities to travel behind parked cars other than their own.

**Alternative Rec:** \*  
(Where Available)



Accessible Parking Next to Room 90

Citation: CBC 1129B.4.3

Minimum Quantity:	1
Maximum Quantity:	1
Unit:	Each
Minimum Estimated Cost:	100
<b>Maximum Estimated Cost:</b>	<b>100</b>
Record Number	187
Priority:	

**Full Rec** Stripe a 48-inch access aisle at the head of the accessible parking space and at the general parking spaces. Install a wheelstop at the head of the accessible parking spaces and at the general parking spaces. Wheelstops shall be used to prevent vehicles from encroaching into access aisles or walkways, but shall not present addition encroachment into those areas (see CBC 1129B.4.3). Install a 36 inch wide detectable warning surface at the sidewalk entrance to each access aisle.

## Parking

**Finding:** The location of the accessible parking spaces requires individuals with disabilities to travel behind parked cars other than their own.

**Alternative Rec:** \*  
(Where Available)



Accessible Parking Next to Room B6

Citation: CBC 1129B.4.3

Minimum Quantity:	1
Maximum Quantity:	1
Unit:	Each
Minimum Estimated Cost:	100
<b>Maximum Estimated Cost:</b>	<b>100</b>
Record Number	188
Priority:	

**Full Rec** Stripe a 48-inch access aisle at the head of the accessible parking spaces and at the general parking spaces. Install a wheelstop at the head of the accessible parking spaces and at the general parking spaces. Wheelstops shall be used to prevent vehicles from encroaching into access aisles or walkways, but shall not present addition encroachment into those areas (see CBC 1129B.4.3). Install a 36 inch wide detectable warning surface at the sidewalk entrance to each access aisle.

# Facility Name: Pacoima Middle School

## Parking

**Finding:** There is no additional signage marked "van-accessible" at the van-accessible parking space on the left. The designated van-accessible space is not compliant.

**Alternative Rec:** \*  
(Where Available)



Accessible Parking Next to Room B6

**Full Rec** Van-accessible parking spaces shall provide additional signage mounted below the International Symbol of Accessibility that states "VAN-ACCESSIBLE" (see CBC 1129B.5 and ADAAG 4.6.4). Remove the van-accessible signage from the noncompliant van-accessible space.

Citation: CBC 1129B.5; ADAAG 4.6.4

Minimum Quantity: 1  
 Maximum Quantity: 1  
 Unit: Each  
 Minimum Estimated Cost: 150  
**Maximum Estimated Cost: 150**  
 Record Number 189  
 Priority:

## Parking

**Finding:** The bottom edge of the post-mounted signage designating the accessible parking spaces are less than 80 inches above the level of the parking space and cannot be viewed when a vehicle is parked in the space.

**Alternative Rec:** \*  
(Where Available)



Accessible Parking Next to Room B6

**Full Rec** Modify the height or replace the post-mounted signage designating the accessible parking spaces to provide at least 80 inches from the parking space finished grade to the bottom edge of the sign. The sign shall be located so that it cannot be obscured by a vehicle parked in the space (see CBC 1129B.5).

Citation: CBC 1129B.5; ADAAG 4.6.4

Minimum Quantity: 1  
 Maximum Quantity: 1  
 Unit: Each  
 Minimum Estimated Cost: 150  
**Maximum Estimated Cost: 150**  
 Record Number 190  
 Priority:

# Facility Name: Pacoima Middle School

## Path of Travel

**Finding:** There are slopes of 12.9% on the primary path of travel on the walkway.

**Alternative Rec:** \*  
**(Where Available)**



Path of Travel at Gate to Parking Next to Room 3

**Full Rec** Resurface the path of travel to provide a level surface that does not exceed a slope greater than 5%. Cross slopes shall not exceed 2%. Otherwise, install a ramp that does not exceed a slope greater than 8.33% and complies with CBC 1133B.5 and ADAAG 4.8.

Citation: CBC 1133B.7.1.3; CBC 1133B.7.3; ADAAG 4.3.7

Minimum Quantity:	1
Maximum Quantity:	1
Unit:	4' x 60'
Minimum Estimated Cost:	1440
<b>Maximum Estimated Cost:</b>	<b>1440</b>
Record Number	154
Priority:	

## Path of Travel

**Finding:** The width of the walkway is 47 inches.

**Alternative Rec:** \*  
**(Where Available)**



Path of Travel to Room 65

**Full Rec** Modify the exterior primary path of travel by extending the width of the walkway to at least 48 inches (see CBC 1118B.2 and ADAAG 4.3.3). Since the accessible route is less than 60 inches in width, provide passing spaces at least 60 inches by 60 inches at reasonable intervals every 200 feet.

Citation: CBC 1133B.7.1; CBC 1133B.2.3; CBC 1118B.2; ADAAG 4.1.3(16); ADAAG 4.3.3; ADAAG 4.30

Minimum Quantity:	1
Maximum Quantity:	1
Unit:	4' x 60'
Minimum Estimated Cost:	1440
<b>Maximum Estimated Cost:</b>	<b>1440</b>
Record Number	156
Priority:	

# Facility Name: Pacoima Middle School

## Path of Travel

**Finding:** The leading edge of the drinking fountains next to the Administration Office, and next to Room 33 is more than 4 inches from the wall and greater than 27 inches from the floor and protrudes into the primary path of travel.

**Alternative Rec:** \*  
**Rec:**  
**(Where Available)**



Protruding Object

**Full Rec** Install a side rail or wing wall next to each side of the drinking fountain to eliminate its protrusion into the primary path of travel. Make certain to provide sufficient clear floor space in front of the drinking fountain with at least 30 inches in width by 48 inches in length (see CBC 1118B.4 and ADAAG 4.2.4.1).

Citation: CBC 1118B.4; ADAAG 4.2.4.1; ADAAG 4.4

Minimum Quantity: 1  
Maximum Quantity: 1  
Unit: 128 Sq Ft  
Minimum Estimated Cost: 640  
**Maximum Estimated Cost: 640**  
Record Number 144  
Priority:

## Path of Travel

**Finding:** The leading edge of the display case next to Room 65 is more than 4 inches from the wall and greater than 27 inches from the floor and protrudes into the primary path of travel.

**Alternative Rec:** \*  
**Rec:**  
**(Where Available)**



Protruding Object

**Full Rec** Install side extensions or wing walls on the display case so that its leading edge is less than 27 inches from the floor.

Citation: CBC 1121B.1; ADAAG 4.2.4.1; ADAAG 4.4

Minimum Quantity: 1  
Maximum Quantity: 1  
Unit: 128 Sq Ft  
Minimum Estimated Cost: 640  
**Maximum Estimated Cost: 640**  
Record Number 172  
Priority:

# Facility Name: Pacoima Middle School

## Ramps

**Finding:** The slope of the bottom landing is 6.9%.

**Alternative Rec:** \*  
(Where Available)



Ramp to Nurse Office

**Full Rec** Resurface the bottom landing of the ramp to provide at least 72 inches in length and 48 inches in width and to provide a level surface not exceeding a slope greater than 2% (see CBC 1133B.5.4.5).

Citation: CBC 1133B.4.5; ADAAG 4.8

Minimum Quantity:	1
Maximum Quantity:	1
Unit:	48 Square Feet
Minimum Estimated Cost:	1872
<b>Maximum Estimated Cost:</b>	<b>1872</b>
Record Number	147
Priority:	

## Ramps

**Finding:** The slope of the ramp is 13.4%.

**Alternative Rec:** \*  
(Where Available)



Ramp to Nurse Office

**Full Rec** Modify the run of the ramp to provide a slope no greater than 8.33% with a cross slope not exceeding 2% (see CBC 1133B.5.3 and ADAAG 4.8.2).

Citation: CBC 1133B.5.3; ADAAG 4.8

Minimum Quantity:	1
Maximum Quantity:	1
Unit:	60 Linear Feet
Minimum Estimated Cost:	4920
<b>Maximum Estimated Cost:</b>	<b>4920</b>
Record Number	148
Priority:	

# Facility Name: Pacoima Middle School

## Ramps

**Finding:** There are no 12-inch extensions beyond the top right and bottom of the ramp.

**Alternative Rec:** \*  
(Where Available)



Ramp to Nurse Office

**Full Rec** Replace the handrails on each side of the ramp to provide a smooth and continuous gripping surface diameter between 1 1/4 inches to 1 7/8 inches, mounted at a height between 34 inches and 38 inches and shall be at a distance no less than 1 1/2 inches from the adjacent wall. The gripping surface shall be smooth and free from interruptions. The handrails shall provide 12-inch extensions, extending beyond the top and bottom of the ramp, that are parallel to the ground surface and return smoothly to the post or wall.

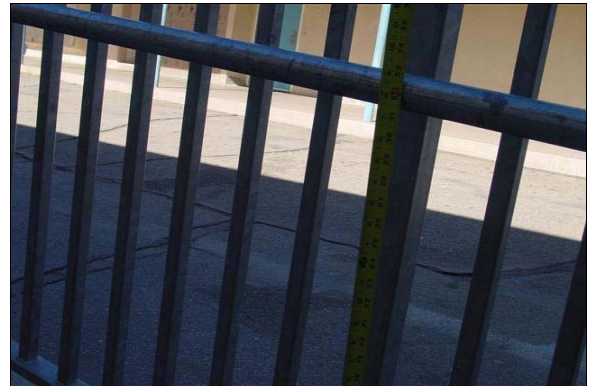
Citation: CBC 1133B.5.5; ADAAG 4.8.5

Minimum Quantity:	1
Maximum Quantity:	1
Unit:	60 Linear Feet
Minimum Estimated Cost:	1320
<b>Maximum Estimated Cost:</b>	<b>1320</b>
Record Number	149
Priority:	

## Ramps

**Finding:** The handrails are mounted at a height of 33 inches.

**Alternative Rec:** \*  
(Where Available)



Ramp to Room 38A

**Full Rec** Replace the handrails on each side of the ramp to provide a smooth and continuous gripping surface diameter between 1 1/4 inches to 1 7/8 inches, mounted at a height between 34 inches and 38 inches and shall be at a distance no less than 1 1/2 inches from the adjacent wall. The gripping surface shall be smooth and free from interruptions. The handrails shall provide 12-inch extensions, extending beyond the top and bottom of the ramp, that are parallel to the ground surface and return smoothly to the post or wall.

Citation: CBC 1133B.5.5; ADAAG 4.8.5

Minimum Quantity:	1
Maximum Quantity:	1
Unit:	60 Linear Feet
Minimum Estimated Cost:	1320
<b>Maximum Estimated Cost:</b>	<b>1320</b>
Record Number	184
Priority:	

# Facility Name: Pacoima Middle School

## Ramps

**Finding:** The slope of the ramp is 8.6%.

**Alternative Rec: \***  
**Rec:**  
**(Where Available)**



Ramp to Room 38A

**Full Rec** Modify the run of the ramp to provide a slope no greater than 8.33% with a cross slope not exceeding 2% (see CBC 1133B.5.3 and ADAAG 4.8.2).

**Citation:** CBC 1133B.5.3; ADAAG 4.8

Minimum Quantity:	1
Maximum Quantity:	1
Unit:	60 Linear Feet
Minimum Estimated Cost:	4920
<b>Maximum Estimated Cost:</b>	<b>4920</b>
Record Number	185
Priority:	

## Doors

**Finding:** The threshold at the gate is rough and uneven.

**Alternative Rec: \***  
**Rec:**  
**(Where Available)**



Gate to Accessible Parking Next to Room B6

**Full Rec** Modify or replace the threshold to provide a smooth transition. The threshold should not exceed a beveled 1/2 inch. Provide a 60 inch level landing in the direction of the gate swing.

**Citation:** CBC 1133B.2.4.1; ADAAG 4.1.6(3)(d)(ii); ADAAG 4.5.2

Minimum Quantity:	1
Maximum Quantity:	1
Unit:	Each
Minimum Estimated Cost:	2500
<b>Maximum Estimated Cost:</b>	<b>2500</b>
Record Number	191
Priority:	

# Facility Name: Pacoima Middle School

## Doors

**Finding:** The gate opening force for the exterior gates are greater than 5 pounds of force.

**Alternative Rec:** \*  
(Where Available)



Gates to Parking Lots

**Full Rec** Adjust the closers on all exterior doors and gates to a maximum door opening force of 5 pounds of force (see ADAAG 4.13.11 and CBC 1133B.2.5).

Citation: CBC 1133B.2.5; ADAAG 4.13.11

Minimum Quantity:	1
Maximum Quantity:	1
Unit:	Each
Minimum Estimated Cost:	5
<b>Maximum Estimated Cost:</b>	<b>5</b>
Record Number	153
Priority:	

## Counters

**Finding:** The facility does not provide accessible signage at the counter that indicates there is assistance provided upon request.

**Alternative Rec:** \*  
(Where Available)



Main Office

**Full Rec** Provide signage at the counter that states: "Assistance Is Available, Please Contact an Employee." The sign should contain the International Symbol of Accessibility.

Citation: CBC 1117B.2.9.3; CBC 1104B.2.4; ADAAG 4.30

Minimum Quantity:	1
Maximum Quantity:	1
Unit:	Each
Minimum Estimated Cost:	58
<b>Maximum Estimated Cost:</b>	<b>58</b>
Record Number	146
Priority:	

# Facility Name: Pacoima Middle School

## Restrooms

**Finding:** There is no signage indicating accessibility on the latch side of the entry door of the restroom. There is no Title 24 gender use signage on the entrance door.

**Alternative Rec: (Where Available)** \*



Boys Restroom Next to Room 65

**Full Rec** Post signage centered 60 inches above the ground surface on the latch side of the entrance door identifying the restroom as accessible. Signage shall include Braille and raised lettering, the gender or unisex use symbol and the ISA symbol. Post Title 24 gender use signage on the door @ 60" o.c. a.f.f.

Citation: CBC 1115B.5; ADAAG 4.1.6; ADAAG 4.1.2(7); ADAAG 4.1.6(3)(e); ADAAG 4.30

Minimum Quantity:	1
Maximum Quantity:	1
Unit:	Each
Minimum Estimated Cost:	58
<b>Maximum Estimated Cost:</b>	<b>58</b>
Record Number	157
Priority:	

## Restrooms

**Finding:** There is 17 inches of clearance on the latch side of the exterior entrance door to the restroom.

**Alternative Rec: (Where Available)** \*



Boys Restroom Next to Room 65

**Full Rec** Provide at least 24 inches of latch side clearance at the entrance door to the restroom (see ADAAG 4.13.6 and Figure 25). Otherwise, install an automatic door opening device to the primary entrance complying with ADAAG 4.13.12 and ANSI/BHMA A156.10, 1985, standards.

Citation: ADAAG 4.13.6

Minimum Quantity:	1
Maximum Quantity:	1
Unit:	Each
Minimum Estimated Cost:	1921
<b>Maximum Estimated Cost:</b>	<b>0</b>
Record Number	158
Priority:	

# Facility Name: Pacoima Middle School

## Restrooms

**Finding:** The height of the threshold at the entrance door to the restroom is greater than 1/2 inch.

**Alternative Rec:** \*  
(Where Available)



Boys Restroom Next to Room 65

**Full Rec** Install a ramp or threshold treatment ramp with a slope no greater than 8.33% to the entrance of the restroom complying with CBC 1133B.5 and ADAAG 4.8 when technically infeasible to modify the threshold.

Citation: ADAAG 4.1.6(3)(d)(ii); ADAAG 4.5.2

Minimum Quantity: 1  
Maximum Quantity: 1  
Unit: Each  
Minimum Estimated Cost: 2500  
**Maximum Estimated Cost: 2500**  
Record Number 159  
Priority:

## Restrooms

**Finding:** The height of the urinal rim in the restroom is 18 inches above the finished floor.

**Alternative Rec:** \*  
(Where Available)



Boys Restroom Next to Room 65

**Full Rec** Lower the urinal designated to be accessible in the restroom so that the rim height is not more than 17 inches above the finished floor.

Citation: ADAAG 4.18.2

Minimum Quantity: 1  
Maximum Quantity: 1  
Unit: Each  
Minimum Estimated Cost: 1097  
**Maximum Estimated Cost: 1097**  
Record Number 160  
Priority:

# Facility Name: Pacoima Middle School

## Restrooms

**Finding:** The height of the controls and operating mechanisms for the hand dryer in the restroom is 47 inches in height.

**Alternative Rec:** \*  
(Where Available)



Boys Restroom Next to Room 65

**Full Rec** Relocate the hand dryer in the restroom to a maximum height of 40 inches for all the controls and operating mechanisms (see CBC 1115B.9.2).

Citation: CBC 1115B.9.2; ADAAG A4.27

Minimum Quantity:	1
Maximum Quantity:	1
Unit:	Each
Minimum Estimated Cost:	277
<b>Maximum Estimated Cost:</b>	<b>277</b>
Record Number	161
Priority:	

## Restrooms

**Finding:** The distance from the center of the lavatory to the adjacent side wall in the restroom is 17 3/4 inches.

**Alternative Rec:** \*  
(Where Available)



Boys Restroom Next to Room 65

**Full Rec** Relocate the lavatory to provide a centerline of at least 18 inches. Make sure to provide at least 30 inches in width and 48 inch length of clear floor space to allow an accessible forward approach (see ADAAG 4.19.3).

Citation: ADAAG 4.19.3

Minimum Quantity:	1
Maximum Quantity:	1
Unit:	Custom
Minimum Estimated Cost:	0
<b>Maximum Estimated Cost:</b>	<b>0</b>
Record Number	162
Priority:	

# Facility Name: Pacoima Middle School

## Restrooms

**Finding:** The door to the stall designated to be accessible in the restroom does not close automatically or have accessible hardware.

**Alternative Rec:** \*  
(Where Available)



Boys Restroom Next to Room 65

**Full Rec** Provide an automatic door closer, spring hinge, pull bar or accessible handle mounted on the inside of the stall door to the stall designated to be accessible in the restroom (see ADAAG A4.17.5). Accessible hardware on the inside and outside of the stall designated to be accessible door shall be equipped with a loop or U-shaped handle mounted immediately below the latch. The latch shall be flip-over style, sliding or other hardware not requiring grasping or twisting. Make certain that the inside and outside door hardware is mounted no more than 48 inches above the finished floor (see CBC 115B.7.1.3 and ADAAG 4.13.9).

Citation: ADAAG A4.17.5

Minimum Quantity:	1
Maximum Quantity:	1
Unit:	Each
Minimum Estimated Cost:	269
<b>Maximum Estimated Cost:</b>	<b>269</b>
Record Number	163
Priority:	

## Restrooms

**Finding:** The location of the toilet paper dispenser in the stall designated to be accessible in the restroom is 14 inches from the front edge of the toilet seat.

**Alternative Rec:** \*  
(Where Available)



Boys Restroom Next to Room 65

**Full Rec** Remount the toilet paper dispenser in the stall designated to be accessible in the restroom so that it is within 12 inches from the front edge of the toilet seat (see CBC 115B.9.3 and ADAAG Figure 29(b)). Toilet paper dispensers must allow continuous paper flow and shall not interfere with the use of the side grab bar.

Citation: CBC 115B.9.3; ADAAG 4.16.6

Minimum Quantity:	1
Maximum Quantity:	1
Unit:	Each
Minimum Estimated Cost:	277
<b>Maximum Estimated Cost:</b>	<b>277</b>
Record Number	164
Priority:	

# Facility Name: Pacoima Middle School

## Restrooms

**Finding:** There is no signage indicating accessibility on the latch side of the entry door of the restroom. There is no Title 24 gender use signage on the entrance door.

**Alternative Rec:** \*  
**(Where Available)**



Girls Restroom Next to Room 65

**Full Rec** Post signage centered 60 inches above the ground surface on the latch side of the entrance door identifying the restroom as accessible. Signage shall include Braille and raised lettering, the gender or unisex use symbol and the ISA symbol. Post Title 24 gender use signage on the door @ 60" o.c. a.f.f.

Citation: CBC 1115B.5; ADAAG 4.1.6; ADAAG 4.1.2(7); ADAAG 4.1.6(3)(e); ADAAG 4.30

Minimum Quantity: 1  
Maximum Quantity: 1  
Unit: Each  
Minimum Estimated Cost: 58  
**Maximum Estimated Cost: 58**  
Record Number 173  
Priority:

## Restrooms

**Finding:** The height of the threshold at the entrance door to the restroom is greater than 1/2 inch.

**Alternative Rec:** \*  
**(Where Available)**



Girls Restroom Next to Room 65

**Full Rec** Install a ramp or threshold treatment ramp with a slope no greater than 8.33% to the entrance of the restroom complying with CBC 1133B.5 and ADAAG 4.8 when technically infeasible to modify the threshold.

Citation: ADAAG 4.1.6(3)(d)(ii); ADAAG 4.5.2

Minimum Quantity: 1  
Maximum Quantity: 1  
Unit: Each  
Minimum Estimated Cost: 2500  
**Maximum Estimated Cost: 2500**  
Record Number 174  
Priority:

# Facility Name: Pacoima Middle School

## Restrooms

**Finding:** The location of the toilet paper dispenser in the standard stall designated to be accessible in the restroom is not within 12 inches of the front edge of the toilet seat.

**Alternative Rec: \***  
**Rec:**  
**(Where Available)**



Girls Restroom Next to Room 65

**Full Rec** Remount the toilet paper dispenser in the stall designated to be accessible in the restroom so that it is within 12 inches from the front edge of the toilet seat (see CBC 1115B.9.3 and ADAAG Figure 29(b)). Toilet paper dispensers must allow continuous paper flow and shall not interfere with the use of the side grab bar.

Citation: CBC 1115B.9.3; ADAAG 4.16.6

Minimum Quantity:	1
Maximum Quantity:	1
Unit:	Each
Minimum Estimated Cost:	277
<b>Maximum Estimated Cost:</b>	<b>277</b>
Record Number	175
Priority:	

## Restrooms

**Finding:** The distance from the center of the toilet to the nearest side wall in the standard stall designated to be accessible in the restroom is 18 1/2 inches.

**Alternative Rec: \***  
**Rec:**  
**(Where Available)**



Girls Restroom Next to Room 65

**Full Rec** Relocate the toilet or stall side wall so that the distance from the centerline of the toilet to the nearest side wall in the stall designated to be accessible in the restroom is exactly 18 inches (see ADAAG Figure 28).

Citation: CBC 1115B.7.1.3 ADAAG 4.17.3

Minimum Quantity:	1
Maximum Quantity:	1
Unit:	Each
Minimum Estimated Cost:	1143
<b>Maximum Estimated Cost:</b>	<b>1143</b>
Record Number	176
Priority:	

# Facility Name: Pacoima Middle School

## Restrooms

**Finding:** The height of the controls and operating mechanisms for the hand dryer in the restroom is 42 inches in height.

**Alternative Rec: (Where Available)** \*



Girls Restroom Next to Room 65

**Full Rec** Relocate the hand dryer in the restroom to a maximum height of 40 inches for all the controls and operating mechanisms (see CBC 1115B.9.2).

Citation: CBC 1115B.9.2; ADAAG A4.27

Minimum Quantity:	1
Maximum Quantity:	1
Unit:	Each
Minimum Estimated Cost:	277
<b>Maximum Estimated Cost:</b>	<b>277</b>
Record Number	177
Priority:	

## Restrooms

**Finding:** There is no signage indicating accessibility on the latch side of the entry door of the restroom. There is no Title 24 gender use signage on the entrance door.

**Alternative Rec: (Where Available)** \*



Mens Staff Restroom Next to Room 65

**Full Rec** Post signage centered 60 inches above the ground surface on the latch side of the entrance door identifying the restroom as accessible. Signage shall include Braille and raised lettering, the gender or unisex use symbol and the ISA symbol. Post Title 24 gender use signage on the door @ 60" o.c. a.f.f.

Citation: CBC 1115B.5; ADAAG 4.1.6; ADAAG 4.1.2(7); ADAAG 4.1.6(3)(e); ADAAG 4.30

Minimum Quantity:	1
Maximum Quantity:	1
Unit:	Each
Minimum Estimated Cost:	58
<b>Maximum Estimated Cost:</b>	<b>58</b>
Record Number	165
Priority:	

# Facility Name: Pacoima Middle School

## Restrooms

**Finding:** The height of the threshold at the entrance door to the restroom is greater than 1/2 inch.

**Alternative Rec:** \*  
(Where Available)



Mens Staff Restroom Next to Room 65

**Full Rec** Install a ramp or threshold treatment ramp with a slope no greater than 8.33% to the entrance of the restroom complying with CBC 1133B.5 and ADAAG 4.8 when technically infeasible to modify the threshold.

Citation: ADAAG 4.1.6(3)(d)(ii); ADAAG 4.5.2

Minimum Quantity:	1
Maximum Quantity:	1
Unit:	Each
Minimum Estimated Cost:	2500
<b>Maximum Estimated Cost:</b>	<b>2500</b>
Record Number	166
Priority:	

## Restrooms

**Finding:** The height of the rim surface of the lavatory designated to be accessible in the restroom is greater than 34 inches above the finished floor.

**Alternative Rec:** \*  
(Where Available)



Mens Staff Restroom Next to Room 65

**Full Rec** Relocate or replace the lavatory designated to be accessible in the restroom to provide a maximum rim surface height of no greater than 34 inches above the finished floor (see ADAAG 4.19.2).

Citation: ADAAG 4.19.2

Minimum Quantity:	1
Maximum Quantity:	1
Unit:	Each
Minimum Estimated Cost:	1286
<b>Maximum Estimated Cost:</b>	<b>1286</b>
Record Number	167
Priority:	

# Facility Name: Pacoima Middle School

## Restrooms

**Finding:** The pipes under the lavatory in the restroom do not provide protection against contact.

**Alternative Rec:** \*  
**Rec:**  
**(Where Available)**



Mens Staff Restroom Next to Room 65

**Full Rec** Insulate or otherwise configure pipes under the lavatory designated to be accessible in the restroom to protect against contact (see ADAAG 4.19.4). Make certain there are no sharp or abrasive surfaces under the lavatory.

Citation: ADAAG 4.19.4

Minimum Quantity:	1
Maximum Quantity:	1
Unit:	Each
Minimum Estimated Cost:	39
<b>Maximum Estimated Cost:</b>	<b>39</b>
Record Number	168
Priority:	

## Restrooms

**Finding:** The bottom edge of the reflecting surface of the mirror in the restroom is 40 3/8 inches above the finished floor.

**Alternative Rec:** \*  
**Rec:**  
**(Where Available)**



Mens Staff Restroom Next to Room 65

**Full Rec** Lower the mirror in the restroom so that the bottom edge of the reflecting surface is no higher than 40 inches above the finished floor and the topmost portion of the reflecting surface extends at least 74 inches above the finished floor (see ADAAG A4.19.6). A single, full-length mirror is recommended since it can accommodate all people. Make certain to provide a minimum clear floor space in front of the mirror of 30 inches in width and 48 inches in length.

Citation: ADAAG A4.19.6; CBC 1115B.9.1.2; ADAAG 4.19.6

Minimum Quantity:	1
Maximum Quantity:	1
Unit:	Each
Minimum Estimated Cost:	291
<b>Maximum Estimated Cost:</b>	<b>291</b>
Record Number	169
Priority:	

# Facility Name: Pacoima Middle School

## Restrooms

**Finding:** The height of the side grab bar is 32 1/2 inches above the finished floor.

**Alternative Rec: \***  
**Rec:**  
**(Where Available)**



Mens Staff Restroom Next to Room 65

**Full Rec** Remount the side and back grab bar so that the height of the gripping surface is centered at 33 inches above finished floor. Grab bars must be able to support a point load of at least 250 pounds and shall be less than the allowable shear stress of the grab bar material.

Citation: CBC 1115B.8.1; ADAAG 4.26

Minimum Quantity:	1
Maximum Quantity:	1
Unit:	Each
Minimum Estimated Cost:	448
<b>Maximum Estimated Cost:</b>	<b>448</b>
Record Number	170
Priority:	

## Restrooms

**Finding:** The distance from the center of the toilet to the nearest side wall is 18 1/4 inches.

**Alternative Rec: \***  
**Rec:**  
**(Where Available)**



Mens Staff Restroom Next to Room 65

**Full Rec** Relocate the toilet or stall side wall so that the distance from the centerline of the toilet to the nearest side wall in the restroom is exactly 18 inches (see ADAAG Figure 28).

Citation: CBC 1115B.7.1.3 ADAAG 4.17.3

Minimum Quantity:	1
Maximum Quantity:	1
Unit:	Each
Minimum Estimated Cost:	1143
<b>Maximum Estimated Cost:</b>	<b>1143</b>
Record Number	171
Priority:	

# Facility Name: Pacoima Middle School

## Restrooms

**Finding:** There is no signage indicating accessibility on the latch side of the entry door of the restroom. There is no Title 24 gender use signage on the entrance door.

**Alternative Rec:** \*  
**(Where Available)**



Unisex Staff Restroom in Nurse Office

**Full Rec** Post signage centered 60 inches above the ground surface on the latch side of the entrance door identifying the restroom as accessible. Signage shall include Braille and raised lettering, the gender or unisex use symbol and the ISA symbol. Post Title 24 gender use signage on the door @ 60" o.c. a.f.f.

Citation: CBC 1115B.5; ADAAG 4.1.6; ADAAG 4.1.2(7); ADAAG 4.1.6(3)(e); ADAAG 4.30

Minimum Quantity:	1
Maximum Quantity:	1
Unit:	Each
Minimum Estimated Cost:	58
<b>Maximum Estimated Cost:</b>	<b>58</b>
Record Number	138
Priority:	

## Restrooms

**Finding:** There are no grab bars in the restroom.

**Alternative Rec:** \*  
**(Where Available)**



Unisex Staff Restroom in Nurse Office

**Full Rec** Install one 36-inch back grab bar and one 42/48-inch side grab bar in the restroom. Grab bars shall be mounted at a height of 33 inches above the finished floor. Grab bars must be able to support a point load of at least 250 pounds and shall be less than the allowable shear stress of the grab bar material.

Citation: CBC 1115B.8; ADAAG 4.17.6; ADAAG 4.26.3

Minimum Quantity:	1
Maximum Quantity:	1
Unit:	Each
Minimum Estimated Cost:	531
<b>Maximum Estimated Cost:</b>	<b>531</b>
Record Number	139
Priority:	

# Facility Name: Pacoima Middle School

## Restrooms

**Finding:** The side grab bar in the restroom does not extend 54 inches from the back wall.

**Alternative Rec: \***  
**Rec:**  
**(Where Available)**



Unisex Staff Restroom in Nurse Office

**Full Rec** Remount the side grab bar. The front end of the grab bar shall extend at least 54 inches from the back wall and the back end of the grab bar shall be mounted within 12 inches from the back wall. Grab bars must be able to support a point load of at least 250 pounds and shall be less than the allowable shear stress of the grab bar material.

Citation: CBC 1115B.8.1; ADAAG 4.26

Minimum Quantity:	1
Maximum Quantity:	1
Unit:	Each
Minimum Estimated Cost:	531
<b>Maximum Estimated Cost:</b>	<b>531</b>
Record Number	140
Priority:	

## Restrooms

**Finding:** The location of the toilet paper dispenser in the restroom is 16 inches of the front edge of the toilet seat.

**Alternative Rec: \***  
**Rec:**  
**(Where Available)**



Unisex Staff Restroom in Nurse Office

**Full Rec** Remount the toilet paper dispenser in the restroom so that it is within 12 inches from the front edge of the toilet seat (see CBC 1115B.9.3 and ADAAG Figure 29(b)). Toilet paper dispensers must allow continuous paper flow and shall not interfere with the use of the side grab bar.

Citation: CBC 1115B.9.3; ADAAG 4.16.6

Minimum Quantity:	1
Maximum Quantity:	1
Unit:	Each
Minimum Estimated Cost:	277
<b>Maximum Estimated Cost:</b>	<b>277</b>
Record Number	141
Priority:	

# Facility Name: Pacoima Middle School

## Restrooms

**Finding:** The distance from the center of the toilet to the nearest side wall in the restroom is 17 7/8 inches.

**Alternative Rec:** \*  
**(Where Available)**



Unisex Staff Restroom in Nurse Office

**Full Rec** Relocate the toilet so that the distance from the centerline of the toilet to the nearest side wall in the restroom is exactly 18 inches (see ADAAG Figure 28).

Citation: CBC 1115B.7.1.3 ADAAG 4.17.3

Minimum Quantity:	1
Maximum Quantity:	1
Unit:	Each
Minimum Estimated Cost:	1143
<b>Maximum Estimated Cost:</b>	<b>1143</b>
Record Number	142
Priority:	

## Restrooms

**Finding:** The height of the controls and operating mechanisms for the paper towel dispenser in the restroom is 50 inches in height.

**Alternative Rec:** \*  
**(Where Available)**



Unisex Staff Restroom in Nurse Office

**Full Rec** Relocate the paper towel dispenser in the restroom to a maximum height of 40 inches for all the controls and operating mechanisms (see CBC 1115B.9.2).

Citation: CBC 1115B.9.2; ADAAG A4.27

Minimum Quantity:	1
Maximum Quantity:	1
Unit:	Each
Minimum Estimated Cost:	277
<b>Maximum Estimated Cost:</b>	<b>277</b>
Record Number	143
Priority:	

# Facility Name: Pacoima Middle School

## Restrooms

**Finding:** There is no signage indicating accessibility on the latch side of the entry door of the restroom. There is no Title 24 gender use signage on the entrance door.

**Alternative Rec: \***  
**Rec:**  
**(Where Available)**



Unisex Student Restroom in Nurse Office

**Full Rec** Post signage centered 60 inches above the ground surface on the latch side of the entrance door identifying the restroom as accessible. Signage shall include Braille and raised lettering, the gender or unisex use symbol and the ISA symbol. Post Title 24 gender use signage on the door @ 60" o.c. a.f.f.

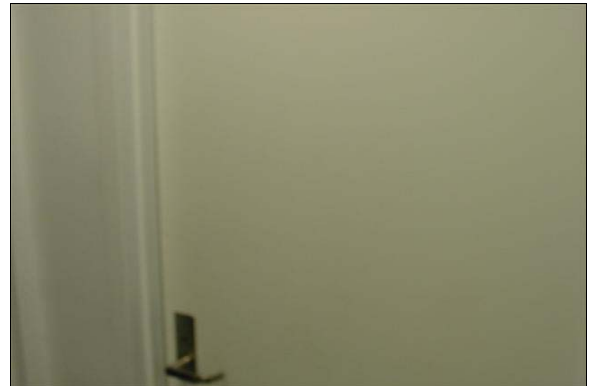
Citation: CBC 1115B.5; ADAAG 4.1.6; ADAAG 4.1.2(7);  
ADAAG 4.1.6(3)(e); ADAAG 4.30

Minimum Quantity: 1  
Maximum Quantity: 1  
Unit: Each  
Minimum Estimated Cost: 58  
**Maximum Estimated Cost: 58**  
Record Number 129  
Priority:

## Restrooms

**Finding:** The door opening force for the interior entrance door to the restroom is greater than 5 pounds.

**Alternative Rec: \***  
**Rec:**  
**(Where Available)**



Unisex Student Restroom in Nurse Office

**Full Rec** Adjust the closer on the interior entrance door to the restroom to a maximum door opening force of 5 pounds (see CBC 1133B.2.5.1 and ADAAG 4.13.11).

Citation: CBC 1133B.2.5.1; ADAAG 4.13.11

Minimum Quantity: 1  
Maximum Quantity: 1  
Unit: Each  
Minimum Estimated Cost: 5  
**Maximum Estimated Cost: 5**  
Record Number 130  
Priority:

# Facility Name: Pacoima Middle School

## Restrooms

**Finding:** This restroom is not accessible and cannot be easily altered. There is not sufficient clear floor space in the restroom. The inward swing of the entrance door reduces the clear floor space in the restroom.

**Alternative Rec:** \*  
**(Where Available)**



Unisex Student Restroom in Nurse Office

**Full Rec** Consult a design professional to modify the restroom. One or more walls may need to be moved to provide sufficient clear floor space to inscribe a 60-inch diameter turning radius in the restroom. The door swing may be reversed to provide greater clear floor space in the restroom.

Citation: CBC 1115B.7.1.2; ADAAG 4.16.2

Minimum Quantity:	1
Maximum Quantity:	1
Unit:	Custom
Minimum Estimated Cost:	0
<b>Maximum Estimated Cost:</b>	<b>0</b>
Record Number	131
Priority:	

## Restrooms

**Finding:** There are no grab bars in the restroom.

**Alternative Rec:** \*  
**(Where Available)**



Unisex Student Restroom in Nurse Office

**Full Rec** Install one 36-inch back grab bar and one 42/48-inch side grab bar in the restroom. Grab bars shall be mounted at a height of 33 inches above the finished floor. Grab bars must be able to support a point load of at least 250 pounds and shall be less than the allowable shear stress of the grab bar material.

Citation: CBC 1115B.8; ADAAG 4.17.6; ADAAG 4.26.3

Minimum Quantity:	1
Maximum Quantity:	1
Unit:	Each
Minimum Estimated Cost:	531
<b>Maximum Estimated Cost:</b>	<b>531</b>
Record Number	132
Priority:	

# Facility Name: Pacoima Middle School

## Restrooms

**Finding:** The distance from the center of the toilet to the nearest side wall in the restroom is 26 inches.

**Alternative Rec: \***  
**(Where Available)**



Unisex Student Restroom in Nurse Office

**Full Rec** Relocate the toilet so that the distance from the centerline of the toilet to the nearest side wall in the restroom is exactly 18 inches (see ADAAG Figure 28).

Citation: CBC 1115B.7.1.3 ADAAG 4.17.3

Minimum Quantity:	1
Maximum Quantity:	1
Unit:	Each
Minimum Estimated Cost:	1143
<b>Maximum Estimated Cost:</b>	<b>1143</b>
Record Number	133
Priority:	

## Restrooms

**Finding:** The seat cover dispenser in the restroom is mounted at 48 inches and there is no clear floor space.

**Alternative Rec: \***  
**(Where Available)**



Unisex Student Restroom in Nurse Office

**Full Rec** Relocate the seat cover dispenser in the restroom so that the height is no greater than 40 inches above the finished floor (see CBC 1115B.9.2). Make certain that the location of the seat cover dispenser does not interfere with the use of a grab bar and provides sufficient clear floor space.

Citation: CBC 1115B.9.2

Minimum Quantity:	1
Maximum Quantity:	1
Unit:	Each
Minimum Estimated Cost:	277
<b>Maximum Estimated Cost:</b>	<b>277</b>
Record Number	134
Priority:	

# Facility Name: Pacoima Middle School

## Restrooms

**Finding:** The knee clearance space under the lavatory designated to be accessible in the restroom is less than 29 inches. The knee depth space under the lavatory designated to be accessible in the restroom is less than 27 inches at 8 inches under the lavatory apron.

**Alternative Rec:** \*  
(Where Available)



Unisex Student Restroom in Nurse Office

**Full Rec** Raise or replace the lavatory designated to be accessible in the restroom to provide at least 29 inches of clear knee space between the finished floor and bottom of the lavatory apron. Make sure to provide at least 27 inches at 8 inches under the apron (see ADAAG 4.19.2).

Citation: ADAAG 4.19.2

Minimum Quantity:	1
Maximum Quantity:	1
Unit:	Each
Minimum Estimated Cost:	1286
<b>Maximum Estimated Cost:</b>	<b>1286</b>
Record Number	135
Priority:	

## Restrooms

**Finding:** The distance from the center of the lavatory to the adjacent side wall in the restroom is 13 inches.

**Alternative Rec:** \*  
(Where Available)



Unisex Student Restroom in Nurse Office

**Full Rec** Relocate the lavatory to provide a centerline of at least 18 inches. Make sure to provide at least 30 inches in width and 48 inch length of clear floor space to allow an accessible forward approach (see ADAAG 4.19.3).

Citation: ADAAG 4.19.3

Minimum Quantity:	1
Maximum Quantity:	1
Unit:	Custom
Minimum Estimated Cost:	0
<b>Maximum Estimated Cost:</b>	<b>0</b>
Record Number	136
Priority:	

# Facility Name: Pacoima Middle School

## Restrooms

**Finding:** There is less than 18 inches on the latch side of the entrance door to the restroom from the pull side.

**Alternative Rec: (Where Available)** \*



Unisex Student Restroom in Nurse Office

**Full Rec** Provide at least 18 inches of latch side clearance at the entrance door to the restroom from the pull side (see ADAAG 4.13.6 and Figure 25). Otherwise, an automatic door opening device may be required to provide an accessible entrance.

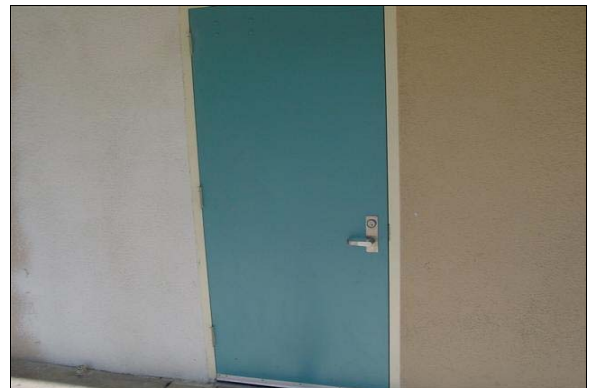
Citation: ADAAG 4.13.6; CBC 1133B.2.4.2

Minimum Quantity:	1
Maximum Quantity:	1
Unit:	None Selected
Minimum Estimated Cost:	0
<b>Maximum Estimated Cost:</b>	<b>0</b>
Record Number	137
Priority:	

## Restrooms

**Finding:** There is no signage indicating accessibility on the latch side of the entry door of the restroom. There is no Title 24 gender use signage on the entrance door.

**Alternative Rec: (Where Available)** \*



Womens Staff Restroom Next to Room 65

**Full Rec** Post signage centered 60 inches above the ground surface on the latch side of the entrance door identifying the restroom as accessible. Signage shall include Braille and raised lettering, the gender or unisex use symbol and the ISA symbol. Post Title 24 gender use signage on the door @ 60" o.c. a.f.f.

Citation: CBC 1115B.5; ADAAG 4.1.6; ADAAG 4.1.2(7); ADAAG 4.1.6(3)(e); ADAAG 4.30

Minimum Quantity:	1
Maximum Quantity:	1
Unit:	Each
Minimum Estimated Cost:	58
<b>Maximum Estimated Cost:</b>	<b>58</b>
Record Number	178
Priority:	

# Facility Name: Pacoima Middle School

## Restrooms

**Finding:** The height of the threshold at the entrance door to the restroom is greater than 1/2 inch.

**Alternative Rec:** \*  
**(Where Available)**



Womens Staff Restroom Next to Room 65

**Full Rec** Install a ramp or threshold treatment ramp with a slope no greater than 8.33% to the entrance of the restroom complying with CBC 1133B.5 and ADAAG 4.8 when technically infeasible to modify the threshold.

Citation: ADAAG 4.1.6(3)(d)(ii); ADAAG 4.5.2

Minimum Quantity: 1  
Maximum Quantity: 1  
Unit: Each  
Minimum Estimated Cost: 2500  
**Maximum Estimated Cost: 2500**  
Record Number 179  
Priority:

## Restrooms

**Finding:** The pipes under the lavatory in the restroom do not provide protection against contact.

**Alternative Rec:** \*  
**(Where Available)**



Womens Staff Restroom Next to Room 65

**Full Rec** Insulate or otherwise configure pipes under the lavatory designated to be accessible in the restroom to protect against contact (see ADAAG 4.19.4). Make certain there are no sharp or abrasive surfaces under the lavatory.

Citation: ADAAG 4.19.4

Minimum Quantity: 1  
Maximum Quantity: 1  
Unit: Each  
Minimum Estimated Cost: 39  
**Maximum Estimated Cost: 39**  
Record Number 180  
Priority:

# Facility Name: Pacoima Middle School

## Restrooms

**Finding:** The location of the toilet paper dispenser is not within 12 inches of the front edge of the toilet seat.

**Alternative Rec: (Where Available)** \*



Womens Staff Restroom Next to Room 65

**Full Rec** Remount the toilet paper dispenser so that it is within 12 inches from the front edge of the toilet seat (see CBC 1115B.9.3 and ADAAG Figure 29(b)). Toilet paper dispensers must allow continuous paper flow and shall not interfere with the use of the side grab bar.

Citation: CBC 1115B.9.3; ADAAG 4.16.6

Minimum Quantity:	1
Maximum Quantity:	1
Unit:	Each
Minimum Estimated Cost:	277
<b>Maximum Estimated Cost:</b>	<b>277</b>
Record Number	181
Priority:	

## Restrooms

**Finding:** The distance from the center of the toilet to the nearest side wall in the restroom is 17 5/8 inches.

**Alternative Rec: (Where Available)** \*



Womens Staff Restroom Next to Room 65

**Full Rec** Relocate the toilet so that the distance from the centerline of the toilet to the nearest side wall in the restroom is exactly 18 inches (see ADAAG Figure 28).

Citation: CBC 1115B.7.1.3 ADAAG 4.17.3

Minimum Quantity:	1
Maximum Quantity:	1
Unit:	Each
Minimum Estimated Cost:	1143
<b>Maximum Estimated Cost:</b>	<b>1143</b>
Record Number	182
Priority:	

# Facility Name: Pacoima Middle School

## Drinking Fountains

**Finding:** There is 26 1/2 inches knee clearance height.

**Alternative Rec:** \*  
**Rec:**  
**(Where Available)**



Drinking Fountain Next to Room 33

**Full Rec** Fifty percent of the drinking fountains on primary paths of travel shall be accessible. Install a "high-low" fountain design to comply with both state and federal requirements and install a side rail or wing wall next to each side of the fountain. Provide at least 30 inches in width and 48 inches in depth in front of the drinking fountain. The height of the spout outlet shall not exceed 36 inches in height. Fountain controls shall be accessible. The spout shall direct the water flow at least 4 inches high and in a trajectory that is parallel or nearly parallel to the front of the drinking fountain. Wall-mounted drinking fountains shall provide a minimum knee clearance height of 27 inches, 30 inches in width and between 18 inches and 19 inches in fountain depth.

Citation: CBC 1117B.1; ADAAG 4.15

Minimum Quantity:	1
Maximum Quantity:	1
Unit:	Each
Minimum Estimated Cost:	2216
<b>Maximum Estimated Cost:</b>	<b>2216</b>
Record Number	183
Priority:	

## Drinking Fountains

**Finding:** The drinking fountain is not a 'high-low' design. There is insufficient clear floor space in front of the drinking fountain.

**Alternative Rec:** \*  
**Rec:**  
**(Where Available)**



Drinking Fountain Next to Room 42A

**Full Rec** Fifty percent of the drinking fountains on primary paths of travel shall be accessible. Install a "high-low" fountain design to comply with both state and federal requirements and install a side rail or wing wall next to each side of the fountain. Provide at least 30 inches in width and 48 inches in depth in front of the drinking fountain. The height of the spout outlet shall not exceed 36 inches in height. Fountain controls shall be accessible. The spout shall direct the water flow at least 4 inches high and in a trajectory that is parallel or nearly parallel to the front of the drinking fountain. Wall-mounted drinking fountains shall provide a minimum knee clearance height of 27 inches, 30 inches in width and between 18 inches and 19 inches in fountain depth.

Citation: CBC 1117B.1; ADAAG 4.15

Minimum Quantity:	1
Maximum Quantity:	1
Unit:	Each
Minimum Estimated Cost:	2216
<b>Maximum Estimated Cost:</b>	<b>2216</b>
Record Number	155
Priority:	

# Facility Name: Pacoima Middle School

## Drinking Fountains

**Finding:** The drinking fountain is not a high-low design. There is insufficient clear floor space in front of the drinking fountain.

**Alternative Rec:** \*  
**Rec:**  
**(Where Available)**



Drinking Fountain Next to the Administration Office

**Full Rec** Fifty percent of the drinking fountains on primary paths of travel shall be accessible. Install a "high-low" fountain design to comply with both state and federal requirements and install a side rail or wing wall next to each side of the fountain. Provide at least 30 inches in width and 48 inches in depth in front of the drinking fountain. The height of the spout outlet shall not exceed 36 inches in height. Fountain controls shall be accessible. The spout shall direct the water flow at least 4 inches high and in a trajectory that is parallel or nearly parallel to the front of the drinking fountain. Wall-mounted drinking fountains shall provide a minimum knee clearance height of 27 inches, 30 inches in width and between 18 inches and 19 inches in fountain depth.

Citation: CBC 1117B.1; ADAAG 4.15

Minimum Quantity:	1
Maximum Quantity:	1
Unit:	Each
Minimum Estimated Cost:	2216
<b>Maximum Estimated Cost:</b>	<b>2216</b>
Record Number	145
Priority:	

## Drinking Fountains

**Finding:** The drinking fountain is not a 'high-low' design. There is less than 27 inches knee clearance height.

**Alternative Rec:** \*  
**Rec:**  
**(Where Available)**



Drinking Fountain Next to the Assistant Principals Office

**Full Rec** Fifty percent of the drinking fountains on primary paths of travel shall be accessible (see CBC 1117B.1 and ADAAG 4.15). Install a "high-low" fountain design to comply with both state and federal requirements and install a side rail or wing wall next to each side of the fountain. Provide at least 30 inches in width and 48 inches in depth in front of the drinking fountain. The height of the spout outlet shall not exceed 36 inches in height. Fountain controls shall be accessible. The spout shall direct the water flow at least 4 inches high and in a trajectory that is parallel or nearly parallel to the front of the drinking fountain. Wall-mounted drinking fountains shall provide a minimum knee clearance height of 27 inches, 30 inches in width and between 18 inches and 19 inches in fountain

Citation: CBC 1117B.1; ADAAG 4.15

Minimum Quantity:	1
Maximum Quantity:	1
Unit:	Each
Minimum Estimated Cost:	2216
<b>Maximum Estimated Cost:</b>	<b>2216</b>
Record Number	150
Priority:	

## Facility Name: Pacoima Middle School

### Emergency Warning Systems

**Finding:** The facility shall have a fire and life safety emergency plan approved by the local building official that specifically addresses the evacuation of individuals with disabilities.

**Alternative Rec:** \*  
(Where Available)



**Full Rec** A fire and life safety emergency plan that specifically addresses the evacuation of individuals with disabilities must be approved by local building officials and the state fire official and comply with CFC Part 9 and CBC 1114B.2 for areas of rescue assistance.

Citation: CFC Part 9 & CBC 1114B.2

Minimum Quantity: 1  
Maximum Quantity: 1  
Unit: None Selected  
Minimum Estimated Cost: 0  
**Maximum Estimated Cost: 0**  
Record Number 192  
Priority:

### Emergency Warning Systems

**Finding:** There are visual warning devices in some restrooms, though no visual warning devices are located elsewhere in the facility.

**Alternative Rec:** (Where Available)  
Altering a facility's programs, or addressing higher priority barriers can reduce or eliminate the need for an area of rescue assistance, such as making certain that an individual with a disability participates in programs located near an already accessible exit. Otherwise creating an accessible exit can provide an acceptable alternative to providing an area of rescue assistance.



**Full Rec** Install visual warning devices integrated with the facility's alarm system complying with CBC 1114B.2.5, ADAAG 4.1.3(14) and ADAAG 4.28 throughout the facility.

Citation: CBC 1114B.2.4; ADAAG 4.1.3(14); ADAAG 4.28

Minimum Quantity: 1  
Maximum Quantity: 1  
Unit: None Selected  
Minimum Estimated Cost: 0  
**Maximum Estimated Cost: 288**  
Record Number 193  
Priority: