

Site Survey of Selected Items
for
Compliance with the Americans with Disabilities Act
(ADAAG)
and
Title 24 of the CBC



This report identifies noncompliant items in remodeling and renovation at an existing school site and provides recommended methods for removal of the barriers identified.

The site survey of James Monroe High School was conducted on December 1, 2006 during a spot check for compliance with the Americans with Disabilities Act Guidelines (ADAAG) and Title 24 of the CBC

This report is not intended to be a complete inspection of the facility.

Facility Name: James Monroe High School

Programs, Services, and Activities

Finding: James Monroe High School provides services to students in grades 9-12. The facility was inspected by Disability Access Consultants, Inc., on December 1, 2006. This is a report of selected items and is not intended as a full report.

Alternative Rec: *
(Where Available)



Full Rec Any renovation or new construction that occurred after January 26, 1992, is subject to meet full code specifications for the California Building Code and ADAAG requirements. All recommendations in this report are based on ADAAG and CBC title 24 requirements. Consult with your design professional to determine which elements are affected by these requirements. It is recommended that Disability Access Consultants, Inc. is consulted for inspection of any new construction or renovation at the facility.

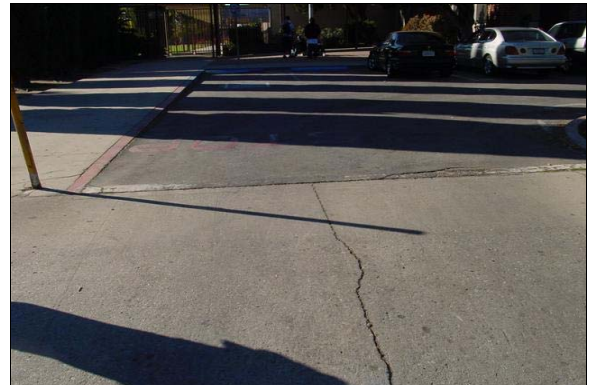
Citation: ADAAG 4.1.2; ADAAG 4.1.3; ADAAG 4.1.5; ADAAG 4.1.6

Minimum Quantity: 1
Maximum Quantity: 1
Unit: None Selected
Minimum Estimated Cost: 0
Maximum Estimated Cost: 0
Record Number: 128
Priority:

Parking

Finding: There is one accessible parking space, which is sufficient for compliance. The accessible parking space measures 102 inches wide and 180 inches long. The access aisle, located on the passenger's side (right side) of the parking space, measures 76 inches wide. The parking space is not "van-accessible". The access aisle does not contain "NO PARKING" in 12" high white letters.

Alternative Rec: *
(Where Available)



Accessible Parking Next to Main Entrance

Full Rec One accessible parking space meets the number required to be designated exclusively for accessible parking. Restripe the existing parking space marked accessible to create one van-accessible parking space measuring at least 108 inches wide and 216 inches long with an access aisle measuring at least 96 inches wide (8 feet) located on the passenger side (right side) of the parking space. Add the words NO PARKING in 12 inch high white letters at the entrance to the accessible parking access aisle.

Citation: CBC 1129B; ADAAG 4.6; ADAAG A4.6.

Minimum Quantity: 1
Maximum Quantity: 1
Unit: Each
Minimum Estimated Cost: 270
Maximum Estimated Cost: 270
Record Number: 208
Priority:

Facility Name: James Monroe High School

Parking

Finding: There is no additional signage marked "van-accessible" at the van-accessible parking space.

Alternative Rec: *
(Where Available)



Accessible Parking Next to Main Entrance

Full Rec Van-accessible parking spaces shall provide additional signage mounted below the International Symbol of Accessibility that states "VAN-ACCESSIBLE" (see CBC 1129B.5 and ADAAG 4.6.4).

Citation:	CBC 1129B.5; ADAAG 4.6.4
Minimum Quantity:	1
Maximum Quantity:	1
Unit:	Each
Minimum Estimated Cost:	150
Maximum Estimated Cost:	150
Record Number	211
Priority:	

Parking

Finding: There are two accessible parking spaces which is sufficient in number as required for compliance. Each accessible parking space provided measures 176 inches long. The accessible space on the left measures 107 inches wide, and is outlined on the left in yellow. There is no designated "van-accessible" parking space provided in the parking lot. The access aisle does not contain "NO PARKING" in 12" high white letters.

Alternative Rec: *
(Where Available)



Accessible Parking Next to Multi-Purpose Room

Full Rec Restripe the designated accessible parking spaces to create one van-accessible and one standard accessible parking space, each measuring at least 108 inches wide and 216 inches long with an access aisle measuring at least 96 inches wide (8 feet) shared between the two accessible parking spaces. The accessible parking space with the access aisle to the right of the space shall be designated "van-accessible." Add the words NO PARKING in 12 inch high white letters at the entrance to each accessible parking access aisle.

Citation:	CBC 1129B; ADAAG 4.6; ADAAG A4.6
Minimum Quantity:	1
Maximum Quantity:	1
Unit:	Each
Minimum Estimated Cost:	270
Maximum Estimated Cost:	270
Record Number	282
Priority:	

Facility Name: James Monroe High School

Parking

Finding: There is no additional signage marked "van-accessible" at the van-accessible parking space.

Alternative Rec: *
(Where Available)



Accessible Parking Next to Multi-Purpose Room

Citation: CBC 1129B.5; ADAAG 4.6.4

Minimum Quantity:	1
Maximum Quantity:	1
Unit:	Each
Minimum Estimated Cost:	150
Maximum Estimated Cost:	150
Record Number	283
Priority:	

Full Rec Van-accessible parking spaces shall provide additional signage mounted below the International Symbol of Accessibility that states "VAN-ACCESSIBLE" (see CBC 1129B.5 and ADAAG 4.6.4).

Parking

Finding: The location of the accessible parking spaces requires individuals with disabilities to travel behind parked cars other than their own.

Alternative Rec: *
(Where Available)



Accessible Parking Next to Multi-Purpose Room

Citation: CBC 1129B.4.3

Minimum Quantity:	1
Maximum Quantity:	1
Unit:	Each
Minimum Estimated Cost:	100
Maximum Estimated Cost:	100
Record Number	284
Priority:	

Full Rec Stripe a 48-inch access aisle at the head of the accessible parking spaces and at the general parking spaces. Install a wheelstop at the head of the accessible parking spaces and at the general parking spaces. Wheelstops shall be used to prevent vehicles from encroaching into access aisles or walkways, but shall not present addition encroachment into those areas. Install a 36 inch wide detectable warning surface at the sidewalk entrance to each access aisle.

Facility Name: James Monroe High School

Parking

Finding: There are two accessible parking spaces which is sufficient in number as required for compliance. Each accessible parking space provided measures 179 inches long. The accessible parking spaces share an access aisle measuring 72 inches wide. There is no designated "van-accessible" parking space provided in the parking lot. The access aisle does not contain "NO PARKING" in 12" high white letters. The space on the left is outlined in yellow.

Alternative Rec: *
Rec:
(Where Available)



Accessible Parking Next to Shop

Full Rec Restripe the designated accessible parking spaces to create one van-accessible and one standard accessible parking space, each measuring at least 108 inches wide and 216 inches long with an access aisle measuring at least 96 inches wide (8 feet) shared between the two accessible parking spaces. The accessible parking space with the access aisle to the right of the space shall be designated "van-accessible." Add the words NO PARKING in 12 inch high white letters at the entrance to each accessible parking access aisle.

Citation: CBC 1129B; ADAAG 4.6; ADAAG A4.6

Minimum Quantity:	1
Maximum Quantity:	1
Unit:	Each
Minimum Estimated Cost:	270
Maximum Estimated Cost:	270
Record Number	275
Priority:	

Parking

Finding: The location of the accessible parking spaces requires individuals with disabilities to travel behind parked cars other than their own.

Alternative Rec: *
Rec:
(Where Available)



Accessible Parking Next to Shop

Full Rec Stripe a 48-inch access aisle at the head of the accessible parking spaces and at the general parking spaces. Install a wheelstop at the head of the accessible parking spaces and at the general parking spaces. Wheelstops shall be used to prevent vehicles from encroaching into access aisles or walkways, but shall not present additional encroachment into those areas. Install a 36 inch wide detectable warning surface at the sidewalk entrance to each access aisle.

Citation: CBC 1129B.4.3

Minimum Quantity:	1
Maximum Quantity:	1
Unit:	Each
Minimum Estimated Cost:	100
Maximum Estimated Cost:	100
Record Number	276
Priority:	

Facility Name: James Monroe High School

Parking

Finding: There is no additional signage marked "van-accessible" at the van-accessible parking space.

Alternative Rec: *
(Where Available)



Accessible Parking Next to Shop

Citation: CBC 1129B.5; ADAAG 4.6.4

Minimum Quantity:	1
Maximum Quantity:	1
Unit:	Each
Minimum Estimated Cost:	150
Maximum Estimated Cost:	150
Record Number	277
Priority:	

Full Rec Van-accessible parking spaces shall provide additional signage mounted below the International Symbol of Accessibility that states "VAN-ACCESSIBLE" (see CBC 1129B.5 and ADAAG 4.6.4).

Parking

Finding: There are two accessible parking spaces which is sufficient in number as required for compliance. Each accessible parking space provided measures 206 inches long. There is no designated "van-accessible" parking space provided in the parking lot. The access aisle does not contain "NO PARKING" in 12" high white letters.

Alternative Rec: *
(Where Available)



Accessible Parking Next to Stadium

Citation: CBC 1129B; ADAAG 4.6; ADAAG A4.6

Minimum Quantity:	1
Maximum Quantity:	1
Unit:	Each
Minimum Estimated Cost:	270
Maximum Estimated Cost:	270
Record Number	279
Priority:	

Full Rec Restripe the designated accessible parking spaces to create one van-accessible and one standard accessible parking space, each measuring at least 108 inches wide and 216 inches long with an access aisle measuring at least 96 inches wide (8 feet) shared between the two accessible parking spaces (see CBC 1129B). The accessible parking space with the access aisle to the right of the space shall be designated "van-accessible." Add the words NO PARKING in 12 inch high white letters at the entrance to each accessible parking access aisle.

Facility Name: James Monroe High School

Parking

Finding: The location of the accessible parking spaces requires individuals with disabilities to travel behind parked cars other than their own.

Alternative Rec: *
Rec:
(Where Available)



Accessible Parking Next to Stadium

Full Rec Stripe a 48-inch access aisle at the head of the accessible parking spaces and at the general parking spaces. Install a wheelstop at the head of the accessible parking spaces and at the general parking spaces. Wheelstops shall be used to prevent vehicles from encroaching into access aisles or walkways, but shall not present addition encroachment into those areas. Install a 36 inch wide detectable warning surface at the sidewalk entrance to each access aisle.

Citation: CBC 1129B.4.3

Minimum Quantity:	1
Maximum Quantity:	1
Unit:	Each
Minimum Estimated Cost:	100
Maximum Estimated Cost:	100
Record Number	280
Priority:	

Parking

Finding: There is no additional signage marked "van-accessible" at the van-accessible parking space.

Alternative Rec: *
Rec:
(Where Available)



Accessible Parking Next to Stadium

Full Rec Van-accessible parking spaces shall provide additional signage mounted below the International Symbol of Accessibility that states "VAN-ACCESSIBLE" (see CBC 1129B.5 and ADAAG 4.6.4).

Citation: CBC 1129B.5; ADAAG 4.6.4

Minimum Quantity:	1
Maximum Quantity:	1
Unit:	Each
Minimum Estimated Cost:	150
Maximum Estimated Cost:	150
Record Number	281
Priority:	

Facility Name: James Monroe High School

Parking

Finding: There is no warning signage posted at the entrance of the parking lots regarding unauthorized use of accessible parking spaces in the parking lot.

Alternative Rec: *
(Where Available)



Warning Signage

Full Rec Post a sign in a conspicuous place to the entrance of the parking lot, or immediately adjacent to and visible from each accessible parking space. The warning sign shall measure at least 17" by 22" and consist of lettering at least 1" in height that clearly and conspicuously states the following; "Unauthorized vehicles parked in designated accessible spaces not displaying distinguishing placards or license plates issued for persons with disabilities may be towed away at owner's expense. Towed vehicles may be reclaimed at __ or by telephoning __." Fill in the blank spaces with appropriate information as a permanent part of the sign and maintain the currency of the information. Be sure to add the CVC 22511.8(a)(d) to the sign.

Citation: CBC 1129B.5; ADAAG 4.6.4 CVC 22511.8(a)(d)

Minimum Quantity:	1
Maximum Quantity:	1
Unit:	Each
Minimum Estimated Cost:	150
Maximum Estimated Cost:	150
Record Number	285
Priority:	

Passenger Loading Zones

Finding: There is no required striped access aisle adjacent to the passenger loading zone. There is no signage designating accessibility posted at the passenger loading zone.

Alternative Rec: *
(Where Available)



Passenger Loading Zone Next to Shop

Full Rec Stripe an access aisle at least 5 feet (60 inches) wide and 20 feet (240 inches) long adjacent and parallel to the vehicle pull-up space. The access aisle striping for the passenger loading zone shall provide immediate access to the adjacent curb ramp. Post signage designating the passenger loading zone as accessible (see CBC 1131B and ADAAG 4.1.2(7)(b)). The sign should contain the International Symbol of Accessibility.

Citation: CBC 1131B; ADAAG 4.6.6; ADAAG 4.1.2(7)(b)

Minimum Quantity:	1
Maximum Quantity:	1
Unit:	Each
Minimum Estimated Cost:	300
Maximum Estimated Cost:	300
Record Number	273
Priority:	

Facility Name: James Monroe High School

Curb Ramps

Finding: There is no curb ramp at the accessible parking space in front of the main entrance. The accessible route between the access aisle and sidewalk crosses a curb.

Alternative Rec: *
Rec:
(Where Available)



Accessible Parking Next to Main Entrance

Full Rec Install a compliant curb ramp that provides a slope no greater than 8.33% and a width of at least 48 inches. The curb ramp shall include truncated domes.

Citation: CBC 1127B.5; ADAAG 4.7.1

Minimum Quantity:	1
Maximum Quantity:	1
Unit:	Each
Minimum Estimated Cost:	1033
Maximum Estimated Cost:	1033
Record Number	209
Priority:	

Curb Ramps

Finding: The slope of the curb ramp is greater than 8.33%. The curb ramp does not provide a detectable warning surface which includes truncated domes.

Alternative Rec: *
Rec:
(Where Available)



Curb Ramp at Passenger Loading Zone Next to Shop

Full Rec Replace the curb ramp with a curb ramp at least 48 inches in width that provides a slope no greater than 8.33% and a cross slope no greater than 2%. The slope of the top landing shall not exceed 2% and shall provide at least 48 inches in length of maneuvering clearance. The bottom landing shall provide a smooth transition. The side flares shall be no greater in slope than 10%. The curb ramp shall have truncated domes.

Citation: CBC 1127B.5.3; ADAAG 4.7.2

Minimum Quantity:	1
Maximum Quantity:	1
Unit:	Each
Minimum Estimated Cost:	1033
Maximum Estimated Cost:	1033
Record Number	274
Priority:	

Facility Name: James Monroe High School

Path of Travel

Finding: There is a crosswalk provided in the parking lot, the crosswalk does not provide detectable warnings at the entrance and exit of the crosswalk.

Alternative Rec: *
Rec:
(Where Available)



Crosswalk Next to Shop

Full Rec Install a detectable warning surface at the entrance and exit of the crosswalk with truncated domes that contrast visually by either light on dark or dark on light which is an integral part of the concrete curb ramp. The truncated domes may be cast in place or stamped or of a prefabricated surface treatment (see CBC 1127B.5.8).

Citation: CBC 1127B.5.8 ADAAG 4.2.9

Minimum Quantity: 1
Maximum Quantity: 1
Unit: Custom
Minimum Estimated Cost: 0
Maximum Estimated Cost: 0
Record Number 278
Priority:

Path of Travel

Finding: Lockers are a service provided for student use. The lockers have hardware which requires tight grasping, pinching, or twisting of the wrist and are not accessible. The designated accessible locker is greater than 48 inches above the finished floor.

Alternative Rec: *
Rec:
(Where Available)



Lockers

Full Rec When an individual with a disability has need for the locker service, modify a locker as needed or provide equivalent facilitation upon request.

Citation: CBC 1105.4.3; ADAAG 4.27.4

Minimum Quantity: 1
Maximum Quantity: 1
Unit: None Selected
Minimum Estimated Cost: 0
Maximum Estimated Cost: 0
Record Number 262
Priority:

Facility Name: James Monroe High School

Restrooms

Finding: There is signage indicating accessibility on the entry door to the restroom. The signage is centered 60 inches above the floor on the latch side of the entrance door and includes Braille and raised lettering, gender use symbol and the ISA symbol.

Alternative Rec: *
(Where Available)



Boys Restroom Building B

Full Rec The restroom is designated accessible and should be made an accessible restroom for the facility. Monitor signage for continued compliance with CBC 1115B.5, ADAAG 4.1.2(7) and ADAAG 4.1.6(3)(e) and ADAAG 4.30.

Citation: CBC 1115B.5; ADAAG 4.1.6; ADAAG 4.1.2(7);
ADAAG 4.1.6(3)(e); ADAAG 4.30

Minimum Quantity: 1
Maximum Quantity: 1
Unit: None Selected
Minimum Estimated Cost: 0
Maximum Estimated Cost: 0
Record Number 212
Priority:

Restrooms

Finding: The bottom 10 inches of the door does not provide a smooth, uninterrupted surface, or panel to allow the door to be opened by a wheelchair footrest without creating a trap or hazardous condition, due to a doorstop.

Alternative Rec: *
(Where Available)



Boys Restroom Building B

Full Rec Remove the doorstop from the door to provide a smooth, uninterrupted surface for the bottom 10 inches of the door.

Citation: CBC 1133B.2.6

Minimum Quantity: 1
Maximum Quantity: 1
Unit: Custom
Minimum Estimated Cost: 0
Maximum Estimated Cost: 0
Record Number 213
Priority:

Facility Name: James Monroe High School

Restrooms

Finding: The door in the stall designated to be accessible in the restroom does not have appropriate accessible hardware.

Alternative Rec: *
Rec:
(Where Available)



Boys Restroom Building B

Full Rec Install a loop or U-shaped handle immediately below the latch hardware on the door to the stall designated to be accessible in the restroom (see CBC 1115B.7.1.3 and ADAAG 4.13.9). Lever-operated or push-type mechanisms may also be used. The latch shall be flip-over style, sliding or other hardware not requiring grasping or twisting.

Citation: CBC 1115B.7.1.3; ADAAG 4.13.9

Minimum Quantity:	1
Maximum Quantity:	1
Unit:	Each
Minimum Estimated Cost:	189
Maximum Estimated Cost:	189
Record Number	214
Priority:	

Restrooms

Finding: The height of the side grab bar in the stall designated to be accessible of the restroom is greater than 33 inches above the finished floor.

Alternative Rec: *
Rec:
(Where Available)



Boys Restroom Building B

Full Rec Remount the side and back grab bar in the stall designated to be accessible in the restroom so that the height of the gripping surface is centered at 33 inches above finished floor. Grab bars must be able to support a point load of at least 250 pounds and shall be less than the allowable shear stress of the grab bar material.

Citation: CBC 1115B.8.1; ADAAG 4.26

Minimum Quantity:	1
Maximum Quantity:	1
Unit:	Each
Minimum Estimated Cost:	448
Maximum Estimated Cost:	448
Record Number	215
Priority:	

Facility Name: James Monroe High School

Restrooms

Finding: The distance from the center of the toilet to the nearest side wall in the stall designated to be accessible in the restroom is 18 1/4 inches.

Alternative Rec: *
Rec:
(Where Available)



Boys Restroom Building B

Full Rec Relocate the toilet or stall side wall so that the distance from the centerline of the toilet to the nearest side wall in the stall designated to be accessible in the restroom is exactly 18 inches (see ADAAG Figure 28).

Citation: CBC 1115B.7.1.3 ADAAG 4.17.3

Minimum Quantity:	1
Maximum Quantity:	1
Unit:	Each
Minimum Estimated Cost:	1143
Maximum Estimated Cost:	1143
Record Number	216
Priority:	

Restrooms

Finding: There is signage indicating accessibility on the entry door to the restroom. The signage is centered 60 inches above the floor on the latch side of the entrance door and includes Braille and raised lettering, gender use symbol and the ISA symbol.

Alternative Rec: *
Rec:
(Where Available)



Boys Restroom Building C

Full Rec The restroom is designated accessible and should be made an accessible restroom for the facility. Monitor signage for continued compliance with CBC 1115B.5, ADAAG 4.1.2(7) and ADAAG 4.1.6(3)(e) and ADAAG 4.30.

Citation: CBC 1115B.5; ADAAG 4.1.6; ADAAG 4.1.2(7); ADAAG 4.1.6(3)(e); ADAAG 4.30

Minimum Quantity:	1
Maximum Quantity:	1
Unit:	None Selected
Minimum Estimated Cost:	0
Maximum Estimated Cost:	0
Record Number	224
Priority:	

Facility Name: James Monroe High School

Restrooms

Finding: There is 8 1/2 inches of clearance on the latch side of the entrance door to the restroom from the push side.

Alternative Rec: (Where Available) *



Boys Restroom Building C

Full Rec Provide at least 12 inches of latch side clearance at the entrance door to the restroom from the push side (see ADAAG 4.13.6 and Figure 25). Otherwise, install an automatic door opening device to the primary entrance complying with ADAAG 4.13.12 and ANSI/BHMA A156.10, 1985, standards.

Citation: ADAAG 4.13.6

Minimum Quantity: 1
Maximum Quantity: 1
Unit: Each
Minimum Estimated Cost: 1921
Maximum Estimated Cost: 0
Record Number: 225
Priority:

Restrooms

Finding: The bottom 10 inches of the door does not provide a smooth, uninterrupted surface, or panel to allow the door to be opened by a wheelchair footrest without creating a trap or hazardous condition, due to a doorstop.

Alternative Rec: (Where Available) *



Boys Restroom Building C

Full Rec Remove the doorstop from the door to provide a smooth, uninterrupted surface for the bottom 10 inches of the door.

Citation: CBC 1133B.2.6

Minimum Quantity: 1
Maximum Quantity: 1
Unit: Custom
Minimum Estimated Cost: 0
Maximum Estimated Cost: 0
Record Number: 226
Priority:

Facility Name: James Monroe High School

Restrooms

Finding: The door to the stall designated to be accessible in the restroom does not close automatically or have accessible hardware.

Alternative Rec: *
(Where Available)



Boys Restroom Building C

Full Rec Provide an automatic door closer, spring hinge, pull bar or accessible handle mounted on the inside of the stall door to the stall designated to be accessible in the restroom (see ADAAG A4.17.5). Accessible hardware on the inside and outside of the stall designated to be accessible door shall be equipped with a loop or U-shaped handle mounted immediately below the latch. The latch shall be flip-over style, sliding or other hardware not requiring grasping or twisting. Make certain that the inside and outside door hardware is mounted no more than 48 inches above the finished floor (see CBC 115B.7.1.3 and ADAAG 4.13.9).

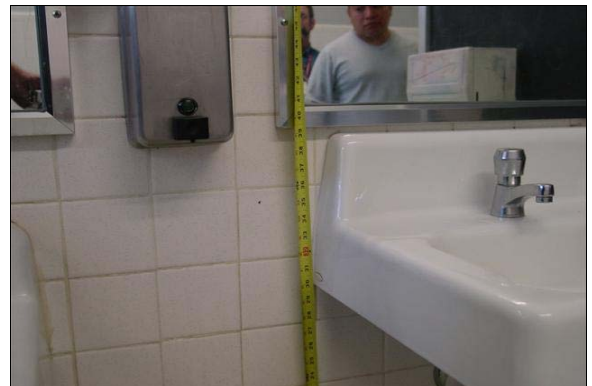
Citation: ADAAG A4.17.5

Minimum Quantity:	1
Maximum Quantity:	1
Unit:	Each
Minimum Estimated Cost:	269
Maximum Estimated Cost:	269
Record Number	227
Priority:	

Restrooms

Finding: The bottom edge of the reflecting surface of the mirror in the restroom is 40 3/4 inches above the finished floor.

Alternative Rec: *
(Where Available)



Boys Restroom Building C

Full Rec Lower the mirror in the restroom so that the bottom edge of the reflecting surface is no higher than 40 inches above the finished floor and the topmost portion of the reflecting surface extends at least 74 inches above the finished floor (see ADAAG A4.19.6). A single, full-length mirror is recommended since it can accommodate all people. Make certain to provide a minimum clear floor space in front of the mirror of 30 inches in width and 48 inches in length.

Citation: ADAAG A4.19.6; CBC 115B.9.1.2; ADAAG 4.19.6

Minimum Quantity:	1
Maximum Quantity:	1
Unit:	Each
Minimum Estimated Cost:	291
Maximum Estimated Cost:	291
Record Number	228
Priority:	

Facility Name: James Monroe High School

Restrooms

Finding: There is no signage indicating accessibility on the latch side of the entry door of the restroom. There is no Title 24 gender use signage on the entrance door.

Alternative Rec: *
Rec:
(Where Available)



Boys Restroom Building E

Full Rec Post signage centered 60 inches above the ground surface on the latch side of the entrance door identifying the restroom as accessible. Signage shall include Braille and raised lettering, the gender or unisex use symbol and the ISA symbol. Post Title 24 gender use signage on the door @ 60" o.c. a.f.f.

Citation: CBC 1115B.5; ADAAG 4.1.6; ADAAG 4.1.2(7); ADAAG 4.1.6(3)(e); ADAAG 4.30

Minimum Quantity:	1
Maximum Quantity:	1
Unit:	Each
Minimum Estimated Cost:	58
Maximum Estimated Cost:	58
Record Number	232
Priority:	

Restrooms

Finding: The clear opening width of the entrance doorway to the restroom is less than 32 inches.

Alternative Rec: *
Rec:
(Where Available)



Boys Restroom Building E

Full Rec Widen the entrance doorway to the restroom to provide a clear opening width of at least 32 inches when the door is open 90 degrees (see ADAAG 4.13.5).

Citation: ADAAG 4.13.5

Minimum Quantity:	1
Maximum Quantity:	1
Unit:	Each
Minimum Estimated Cost:	750
Maximum Estimated Cost:	750
Record Number	232
Priority:	

Facility Name: James Monroe High School

Restrooms

Finding: The bottom 10 inches of the door does not provide a smooth, uninterrupted surface, or panel to allow the door to be opened by a wheelchair footrest without creating a trap or hazardous condition, due to a doorstop.

Alternative Rec: (Where Available) *



Boys Restroom Building E

Full Rec Remove the doorstop from the door to provide a smooth, uninterrupted surface for the bottom 10 inches of the door.

Citation: CBC 1133B.2.6

Minimum Quantity: 1
Maximum Quantity: 1
Unit: Custom
Minimum Estimated Cost: 0
Maximum Estimated Cost: 0
Record Number 234
Priority:

Restrooms

Finding: There is 5 inches of clearance on the latch side of the entrance door to the restroom from the push side.

Alternative Rec: (Where Available) *



Boys Restroom Building E

Full Rec Provide at least 12 inches of latch side clearance at the entrance door to the restroom from the push side (see ADAAG 4.13.6 and Figure 25). Otherwise, install an automatic door opening device to the primary entrance complying with ADAAG 4.13.12 and ANSI/BHMA A156.10, 1985, standards.

Citation: ADAAG 4.13.6

Minimum Quantity: 1
Maximum Quantity: 1
Unit: Each
Minimum Estimated Cost: 1921
Maximum Estimated Cost: 0
Record Number 235
Priority:

Facility Name: James Monroe High School

Restrooms

Finding: The urinal in the restroom does not provide a tapered, elongated rim.

Alternative Rec: (Where Available) *



Boys Restroom Building E

Full Rec Replace the urinal designated to be accessible in the restroom with a wall-mounted or stall-type tapered, elongated rim unit complying with ADAAG 4.18.2. The height of the rim surface of the urinal designated to be accessible shall not exceed 17 inches above the finished floor and the flush control valve shall not exceed a height of 44 inches above the finished floor.

Citation: ADAAG 4.18.2

Minimum Quantity: 1
Maximum Quantity: 1
Unit: Each
Minimum Estimated Cost: 951
Maximum Estimated Cost: 951
Record Number: 236
Priority:

Restrooms

Finding: There is insufficient clear floor space in the stall designated to be accessible in the restroom. The door to the stall designated to be accessible in the restroom does not have accessible hardware.

Alternative Rec: (Where Available) *



Boys Restroom Building E

Full Rec Modify or replace the stall designated to be accessible in the restroom so that it complies with ADAAG 4.17.3, CBC 1115B and CBC Figures 11B-1A and 1B. Standard accessible stalls require 60 inches in width with 56 inches depth for wall-mounted toilets or 59 inches depth for floor-mounted toilets to accommodate individuals in wheelchairs. The minimum width of a front-approach doorway shall provide at least 32 inches and a side-approach doorway shall provide at least 34 inches. The door shall swing outward, close automatically and provide accessible hardware.

Citation: CBC 1115B; ADAAG 4.17.3; ADAAG A4.17.3

Minimum Quantity: 1
Maximum Quantity: 1
Unit: Each
Minimum Estimated Cost: 4000
Maximum Estimated Cost: 4000
Record Number: 237
Priority:

Facility Name: James Monroe High School

Restrooms

Finding: The height of the toilet seat in the stall designated to be accessible in the restroom is less than 17 inches above the finished floor.

Alternative Rec: *
(Where Available)



Boys Restroom Building E

Full Rec Remove or modify the toilet in the stall designated to be accessible in the restroom so that the seat height is between 17 inches and 19 inches above the finished floor (see ADAAG 4.16.3).

Citation: ADAAG 4.16.3

Minimum Quantity:	1
Maximum Quantity:	1
Unit:	Each
Minimum Estimated Cost:	1707
Maximum Estimated Cost:	1707
Record Number	238
Priority:	

Restrooms

Finding: The flush control on the toilet in the stall designated to be accessible in the restroom is not on the wide (approach) side of the toilet.

Alternative Rec: *
(Where Available)



Boys Restroom Building E

Full Rec Relocate the flush control on the toilet in the stall designated to be accessible in the restroom so that it is on the wide (approach) side of the toilet area (see ADAAG 4.16.5). Flush controls shall be hand-operated or automatic mechanisms.

Citation: ADAAG 4.16.5; ADAAG 4.27.4

Minimum Quantity:	1
Maximum Quantity:	1
Unit:	Each
Minimum Estimated Cost:	127
Maximum Estimated Cost:	127
Record Number	239
Priority:	

Facility Name: James Monroe High School

Restrooms

Finding: The height of the side grab bar in the stall designated to be accessible of the restroom is 33 3/8 inches above the finished floor. The side grab bar in the stall designated to be accessible in the restroom does not extend 54 inches from the back wall.

Alternative Rec: *
(Where Available)



Boys Restroom Building E

Full Rec Remount the side grab bar in the stall designated to be accessible in the restroom so that the height of the gripping surface is centered at 33 inches above finished floor. The front end of the grab bar shall extend at least 54 inches from the back wall and the back end of the grab bar shall be mounted within 12 inches from the back wall. Grab bars must be able to support a point load of at least 250 pounds and shall be less than the allowable shear stress of the grab bar material.

Citation: CBC 1115B.8.1; ADAAG 4.26

Minimum Quantity:	1
Maximum Quantity:	1
Unit:	Each
Minimum Estimated Cost:	448
Maximum Estimated Cost:	448
Record Number	240
Priority:	

Restrooms

Finding: The height of the rim surface of the lavatory designated to be accessible in the restroom is greater than 34 inches above the finished floor.

Alternative Rec: *
(Where Available)



Boys Restroom Building E

Full Rec Relocate or replace the lavatory designated to be accessible in the restroom to provide a maximum rim surface height of no greater than 34 inches above the finished floor (see ADAAG 4.19.2).

Citation: ADAAG 4.19.2

Minimum Quantity:	1
Maximum Quantity:	1
Unit:	Each
Minimum Estimated Cost:	1286
Maximum Estimated Cost:	1286
Record Number	241
Priority:	

Facility Name: James Monroe High School

Restrooms

Finding: The height of the controls and operating mechanisms for the hand dryer in the restroom is greater than 40 inches in height.

Alternative Rec: *
(Where Available)



Boys Restroom Building E

Full Rec Relocate the hand dryer in the restroom to a maximum height of 40 inches for all the controls and operating mechanisms (see CBC 1115B.9.2).

Citation: CBC 1115B.9.2; ADAAG A4.27

Minimum Quantity:	1
Maximum Quantity:	1
Unit:	Each
Minimum Estimated Cost:	277
Maximum Estimated Cost:	277
Record Number	242
Priority:	

Restrooms

Finding: There is signage indicating accessibility on the latch side of the entry door of the restroom, but it is centered at 59 inches above the finished floor. There is Title 24 gender use signage on the entrance door.

Alternative Rec: *
(Where Available)



Boys Restroom Building F

Full Rec Post signage centered 60 inches above the ground surface on the latch side of the entrance door identifying the restroom as accessible. Signage shall include Braille and raised lettering, the gender or unisex use symbol and the ISA symbol.

Citation: CBC 1115B.5; ADAAG 4.1.6; ADAAG 4.1.2(7); ADAAG 4.1.6(3)(e); ADAAG 4.30

Minimum Quantity:	1
Maximum Quantity:	1
Unit:	Each
Minimum Estimated Cost:	58
Maximum Estimated Cost:	58
Record Number	255
Priority:	

Facility Name: James Monroe High School

Restrooms

Finding: The bottom 10 inches of the door does not provide a smooth, uninterrupted surface, or panel to allow the door to be opened by a wheelchair footrest without creating a trap or hazardous condition, due to a doorstop.

Alternative Rec: *
(Where Available)



Boys Restroom Building F

Full Rec Remove the doorstop from the door to provide a smooth, uninterrupted surface for the bottom 10 inches of the door.

Citation: CBC 1133B.2.6

Minimum Quantity: 1
Maximum Quantity: 1
Unit: Custom
Minimum Estimated Cost: 0
Maximum Estimated Cost: 0
Record Number 256
Priority:

Restrooms

Finding: The bottom edge of the reflecting surface of the mirror in the restroom is greater than 40 inches above the finished floor.

Alternative Rec: *
(Where Available)



Boys Restroom Building F

Full Rec Lower the mirror in the restroom so that the bottom edge of the reflecting surface is no higher than 40 inches above the finished floor and the topmost portion of the reflecting surface extends at least 74 inches above the finished floor (see ADAAG A4.19.6). A single, full-length mirror is recommended since it can accommodate all people. Make certain to provide a minimum clear floor space in front of the mirror of 30 inches in width and 48 inches in length.

Citation: ADAAG A4.19.6; CBC 1115B.9.1.2; ADAAG 4.19.6

Minimum Quantity: 1
Maximum Quantity: 1
Unit: Each
Minimum Estimated Cost: 291
Maximum Estimated Cost: 291
Record Number 257
Priority:

Facility Name: James Monroe High School

Restrooms

Finding: The stall door to the stall designated to be accessible in the restroom swings inward limiting the clear floor space in the stall designated to be accessible.

Alternative Rec: *
(Where Available)



Boys Restroom Building F

Full Rec Modify the swing of the door on the stall designated to be accessible in the restroom so that it does not limit clear floor space in the stall.

Citation: CBC 115B.7.1.3; ADAAG A4.17.3

Minimum Quantity:	1
Maximum Quantity:	1
Unit:	Each
Minimum Estimated Cost:	189
Maximum Estimated Cost:	189
Record Number	258
Priority:	

Restrooms

Finding: The height of the side grab bar in the stall designated to be accessible of the restroom is greater than 33 inches above the finished floor. The side grab bar in the stall designated to be accessible in the restroom does not extend 54 inches from the back wall.

Alternative Rec: *
(Where Available)



Boys Restroom Building F

Full Rec Remount the side grab bar in the stall designated to be accessible in the restroom so that the height of the gripping surface is centered at 33 inches above finished floor. The front end of the grab bar shall extend at least 54 inches from the back wall and the back end of the grab bar shall be mounted within 12 inches from the back wall. Grab bars must be able to support a point load of at least 250 pounds and shall be less than the allowable shear stress of the grab bar material.

Citation: CBC 1115B.8.1; ADAAG 4.26

Minimum Quantity:	1
Maximum Quantity:	1
Unit:	Each
Minimum Estimated Cost:	448
Maximum Estimated Cost:	448
Record Number	259
Priority:	

Facility Name: James Monroe High School

Restrooms

Finding: The toilet paper dispenser in the stall designated to be accessible in the restroom interferes with the use of the side grab bar.

Alternative Rec: *
Rec:
(Where Available)



Boys Restroom Building F

Citation: CBC 1115B.9.3; ADAAG 4.16.6

Minimum Quantity:	1
Maximum Quantity:	1
Unit:	Each
Minimum Estimated Cost:	277
Maximum Estimated Cost:	277
Record Number	260
Priority:	

Full Rec Remount the toilet paper dispenser in the stall designated to be accessible in the restroom so that it does not interfere with the use of the side grab bar (see ADAAG 4.16.6 and Figure 29(b)). Toilet paper dispensers must allow continuous paper flow.

Restrooms

Finding: The distance from the center of the toilet to the nearest side wall in the stall designated to be accessible in the restroom is 18 3/8 inches.

Alternative Rec: *
Rec:
(Where Available)



Boys Restroom Building F

Citation: CBC 1115B.7.1.3 ADAAG 4.17.3

Minimum Quantity:	1
Maximum Quantity:	1
Unit:	Each
Minimum Estimated Cost:	1143
Maximum Estimated Cost:	1143
Record Number	261
Priority:	

Full Rec Relocate the toilet or stall side wall so that the distance from the centerline of the toilet to the nearest side wall in the stall designated to be accessible in the restroom is exactly 18 inches (see ADAAG Figure 28).

Facility Name: James Monroe High School

Restrooms

Finding: There is no signage indicating accessibility on the latch side of the entry door of the restroom. There is Title 24 gender use signage on the entrance door.

Alternative Rec: *
(Where Available)



Boys Restroom Building T

Full Rec Post signage centered 60 inches above the ground surface on the latch side of the entrance door identifying the restroom as accessible. Signage shall include Braille and raised lettering, the gender or unisex use symbol and the ISA symbol.

Citation: CBC 1115B.5; ADAAG 4.1.6; ADAAG 4.1.2(7); ADAAG 4.1.6(3)(e); ADAAG 4.30

Minimum Quantity: 1
Maximum Quantity: 1
Unit: Each
Minimum Estimated Cost: 58
Maximum Estimated Cost: 58
Record Number 263
Priority:

Restrooms

Finding: The bottom 10 inches of the door does not provide a smooth, uninterrupted surface, or panel to allow the door to be opened by a wheelchair footrest without creating a trap or hazardous condition, due to a doorstop.

Alternative Rec: *
(Where Available)



Boys Restroom Building T

Full Rec Remove the doorstop from the door to provide a smooth, uninterrupted surface for the bottom 10 inches of the door.

Citation: CBC 1133B.2.6

Minimum Quantity: 1
Maximum Quantity: 1
Unit: Custom
Minimum Estimated Cost: 0
Maximum Estimated Cost: 0
Record Number 264
Priority:

Facility Name: James Monroe High School

Restrooms

Finding: The door to the stall designated to be accessible in the restroom does not close automatically or have accessible hardware.

Alternative Rec: *
Rec:
(Where Available)



Boys Restroom Building T

Full Rec Provide an automatic door closer, spring hinge, pull bar or accessible handle mounted on the inside of the stall door to the stall designated to be accessible in the restroom (see ADAAG A4.17.5). Accessible hardware on the inside and outside of the stall designated to be accessible door shall be equipped with a loop or U-shaped handle mounted immediately below the latch. The latch shall be flip-over style, sliding or other hardware not requiring grasping or twisting. Make certain that the inside and outside door hardware is mounted no more than 48 inches above the finished floor (see CBC 115B.7.1.3 and ADAAG 4.13.9).

Citation: ADAAG A4.17.5

Minimum Quantity:	1
Maximum Quantity:	1
Unit:	Each
Minimum Estimated Cost:	269
Maximum Estimated Cost:	269
Record Number	265
Priority:	

Restrooms

Finding: The height of the side grab bar in the stall designated to be accessible of the restroom is 33 1/2 inches above the finished floor.

Alternative Rec: *
Rec:
(Where Available)



Boys Restroom Building T

Full Rec Remount the side grab bar in the stall designated to be accessible in the restroom so that the height of the gripping surface is centered at 33 inches above finished floor. Grab bars must be able to support a point load of at least 250 pounds and shall be less than the allowable shear stress of the grab bar material.

Citation: CBC 115B.8.1; ADAAG 4.26

Minimum Quantity:	1
Maximum Quantity:	1
Unit:	Each
Minimum Estimated Cost:	448
Maximum Estimated Cost:	448
Record Number	266
Priority:	

Facility Name: James Monroe High School

Restrooms

Finding: The distance from the center of the toilet to the nearest side wall in the stall designated to be accessible in the restroom is 17 5/8 inches.

Alternative Rec: *
(Where Available)



Boys Restroom Building T

Full Rec Relocate the toilet or stall side wall so that the distance from the centerline of the toilet to the nearest side wall in the stall designated to be accessible in the restroom is exactly 18 inches (see ADAAG Figure 28).

Citation: CBC 1115B.7.1.3 ADAAG 4.17.3

Minimum Quantity:	1
Maximum Quantity:	1
Unit:	Each
Minimum Estimated Cost:	1143
Maximum Estimated Cost:	1143
Record Number	267
Priority:	

Restrooms

Finding: There is no signage indicating accessibility on the latch side of the entry door of the restroom. There is Title 24 gender use signage on the entrance door.

Alternative Rec: *
(Where Available)



Girls Restroom Building B

Full Rec Post signage centered 60 inches above the ground surface on the latch side of the entrance door identifying the restroom as accessible. Signage shall include Braille and raised lettering, the gender or unisex use symbol and the ISA symbol.

Citation: CBC 1115B.5; ADAAG 4.1.6; ADAAG 4.1.2(7); ADAAG 4.1.6(3)(e); ADAAG 4.30

Minimum Quantity:	1
Maximum Quantity:	1
Unit:	Each
Minimum Estimated Cost:	58
Maximum Estimated Cost:	58
Record Number	217
Priority:	

Facility Name: James Monroe High School

Restrooms

Finding: The bottom 10 inches of the door does not provide a smooth, uninterrupted surface, or panel to allow the door to be opened by a wheelchair footrest without creating a trap or hazardous condition, due to a doorstop.

Alternative Rec: *
(Where Available)



Girls Restroom Building B

Full Rec Remove the doorstop from the door to provide a smooth, uninterrupted surface for the bottom 10 inches of the door.

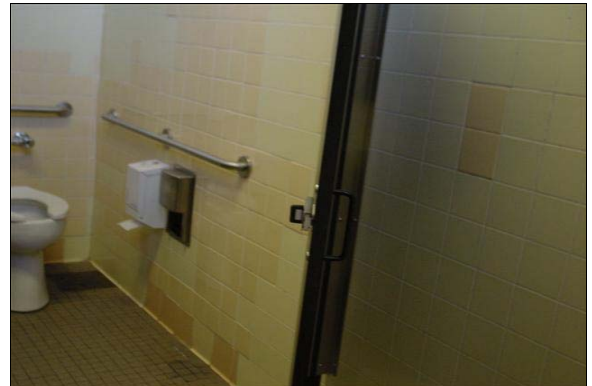
Citation: CBC 1133B.2.6

Minimum Quantity:	1
Maximum Quantity:	1
Unit:	Custom
Minimum Estimated Cost:	0
Maximum Estimated Cost:	0
Record Number	218
Priority:	

Restrooms

Finding: The door to the stall designated to be accessible in the restroom does not close automatically or have accessible hardware.

Alternative Rec: *
(Where Available)



Girls Restroom Building B

Full Rec Provide an automatic door closer, spring hinge, pull bar or accessible handle mounted on the inside of the stall door to the stall designated to be accessible in the restroom (see ADAAG A4.17.5). Accessible hardware on the inside and outside of the stall designated to be accessible door shall be equipped with a loop or U-shaped handle mounted immediately below the latch. The latch shall be flip-over style, sliding or other hardware not requiring grasping or twisting. Make certain that the inside and outside door hardware is mounted no more than 48 inches above the finished floor (see CBC 115B.7.1.3 and ADAAG 4.13.9).

Citation: ADAAG A4.17.5

Minimum Quantity:	1
Maximum Quantity:	1
Unit:	Each
Minimum Estimated Cost:	269
Maximum Estimated Cost:	269
Record Number	219
Priority:	

Facility Name: James Monroe High School

Restrooms

Finding: The distance from the center of the toilet to the nearest side wall in the stall designated to be accessible in the restroom is 18 3/8 inches.

Alternative Rec: *
Rec:
(Where Available)



Girls Restroom Building B

Full Rec Relocate the toilet or stall side wall so that the distance from the centerline of the toilet to the nearest side wall in the stall designated to be accessible in the restroom is exactly 18 inches (see ADAAG Figure 28).

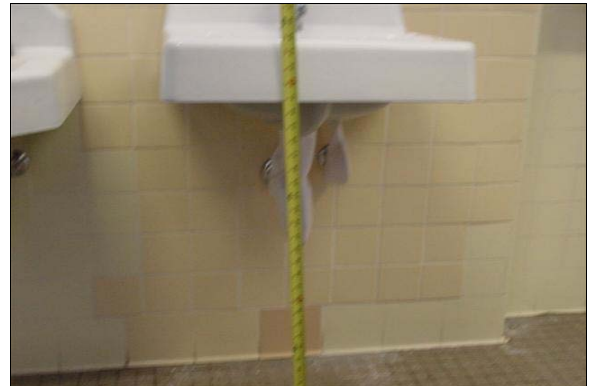
Citation: CBC 1115B.7.1.3 ADAAG 4.17.3

Minimum Quantity:	1
Maximum Quantity:	1
Unit:	Each
Minimum Estimated Cost:	1143
Maximum Estimated Cost:	1143
Record Number	220
Priority:	

Restrooms

Finding: The height of the rim surface of the lavatory designated to be accessible in the restroom is greater than 34 inches above the finished floor.

Alternative Rec: *
Rec:
(Where Available)



Girls Restroom Building B

Full Rec Relocate or replace the lavatory designated to be accessible in the restroom to provide a maximum rim surface height of no greater than 34 inches above the finished floor (see ADAAG 4.19.2).

Citation: ADAAG 4.19.2

Minimum Quantity:	1
Maximum Quantity:	1
Unit:	Each
Minimum Estimated Cost:	1286
Maximum Estimated Cost:	1286
Record Number	221
Priority:	

Facility Name: James Monroe High School

Restrooms

Finding: The height of the controls and operating mechanisms for the soap dispenser in the restroom is 42 inches in height.

Alternative Rec: *
(Where Available)



Girls Restroom Building B

Full Rec Relocate the soap dispenser in the restroom to a maximum height of 40 inches for all the controls and operating mechanisms (see CBC 1115B.9.2).

Citation: CBC 1115B.9.2; ADAAG A4.27

Minimum Quantity:	1
Maximum Quantity:	1
Unit:	Each
Minimum Estimated Cost:	277
Maximum Estimated Cost:	277
Record Number	222
Priority:	

Restrooms

Finding: The bottom edge of the reflecting surface of the mirror in the restroom is 40 1/4 inches above the finished floor.

Alternative Rec: *
(Where Available)



Girls Restroom Building B

Full Rec Lower the mirror in the restroom so that the bottom edge of the reflecting surface is no higher than 40 inches above the finished floor and the topmost portion of the reflecting surface extends at least 74 inches above the finished floor (see ADAAG A4.19.6). A single, full-length mirror is recommended since it can accommodate all people. Make certain to provide a minimum clear floor space in front of the mirror of 30 inches in width and 48 inches in length.

Citation: ADAAG A4.19.6; CBC 1115B.9.1.2; ADAAG 4.19.6

Minimum Quantity:	1
Maximum Quantity:	1
Unit:	Each
Minimum Estimated Cost:	291
Maximum Estimated Cost:	291
Record Number	223
Priority:	

Facility Name: James Monroe High School

Restrooms

Finding: There is signage indicating accessibility on the entry door to the restroom. The signage is centered 60 inches above the floor on the latch side of the entrance door and includes Braille and raised lettering, gender use symbol and the ISA symbol.

Alternative Rec: *
(Where Available)



Girls Restroom Building C

Full Rec The restroom is designated accessible and should be made an accessible restroom for the facility. Monitor signage for continued compliance with CBC 1115B.5, ADAAG 4.1.2(7) and ADAAG 4.1.6(3)(e) and ADAAG 4.30.

Citation: CBC 1115B.5; ADAAG 4.1.6; ADAAG 4.1.2(7); ADAAG 4.1.6(3)(e); ADAAG 4.30

Minimum Quantity: 1
Maximum Quantity: 1
Unit: None Selected
Minimum Estimated Cost: 0
Maximum Estimated Cost: 0
Record Number 229
Priority:

Restrooms

Finding: The bottom 10 inches of the door does not provide a smooth, uninterrupted surface, or panel to allow the door to be opened by a wheelchair footrest without creating a trap or hazardous condition, due to a doorstop.

Alternative Rec: *
(Where Available)



Girls Restroom Building C

Full Rec Remove the doorstop from the door to provide a smooth, uninterrupted surface for the bottom 10 inches of the door.

Citation: CBC 1133B.2.6

Minimum Quantity: 1
Maximum Quantity: 1
Unit: Custom
Minimum Estimated Cost: 0
Maximum Estimated Cost: 0
Record Number 230
Priority:

Facility Name: James Monroe High School

Restrooms

Finding: The door to the stall designated to be accessible in the restroom does not close automatically or have accessible hardware.

Alternative Rec: *
Rec:
(Where Available)



Girls Restroom Building C

Citation: ADAAG A4.17.5

Minimum Quantity:	1
Maximum Quantity:	1
Unit:	Each
Minimum Estimated Cost:	269
Maximum Estimated Cost:	269
Record Number	231
Priority:	

Full Rec Provide an automatic door closer, spring hinge, pull bar or accessible handle mounted on the inside of the stall door to the stall designated to be accessible in the restroom (see ADAAG A4.17.5). Accessible hardware on the inside and outside of the stall designated to be accessible door shall be equipped with a loop or U-shaped handle mounted immediately below the latch. The latch shall be flip-over style, sliding or other hardware not requiring grasping or twisting. Make certain that the inside and outside door hardware is mounted no more than 48 inches above the finished floor (see CBC 115B.7.1.3 and ADAAG 4.13.9).

Restrooms

Finding: There is no signage indicating accessibility on the latch side of the entry door of the restroom. There is no Title 24 gender use signage on the entrance door.

Alternative Rec: *
Rec:
(Where Available)



Girls Restroom Building E

Citation: CBC 1115B.5; ADAAG 4.1.6; ADAAG 4.1.2(7); ADAAG 4.1.6(3)(e); ADAAG 4.30

Minimum Quantity:	1
Maximum Quantity:	1
Unit:	Each
Minimum Estimated Cost:	58
Maximum Estimated Cost:	58
Record Number	243
Priority:	

Full Rec Post signage centered 60 inches above the ground surface on the latch side of the entrance door identifying the restroom as accessible. Signage shall include Braille and raised lettering, the gender or unisex use symbol and the ISA symbol. Post Title 24 gender use signage on the door @ 60" o.c. a.f.f.

Facility Name: James Monroe High School

Restrooms

Finding: The clear opening width of the entrance doorway to the restroom is less than 32 inches.

Alternative Rec: *
(Where Available)



Girls Restroom Building E

Full Rec Widen the entrance doorway to the restroom to provide a clear opening width of at least 32 inches when the door is open 90 degrees (see ADAAG 4.13.5).

Citation: ADAAG 4.13.5

Minimum Quantity:	1
Maximum Quantity:	1
Unit:	Each
Minimum Estimated Cost:	750
Maximum Estimated Cost:	750
Record Number	244
Priority:	

Restrooms

Finding: The bottom 10 inches of the door does not provide a smooth, uninterrupted surface, or panel to allow the door to be opened by a wheelchair footrest without creating a trap or hazardous condition, due to a doorstop.

Alternative Rec: *
(Where Available)



Girls Restroom Building E

Full Rec Remove the doorstop from the door to provide a smooth, uninterrupted surface for the bottom 10 inches of the door.

Citation: CBC 1133B.2.6

Minimum Quantity:	1
Maximum Quantity:	1
Unit:	Custom
Minimum Estimated Cost:	0
Maximum Estimated Cost:	0
Record Number	245
Priority:	

Facility Name: James Monroe High School

Restrooms

Finding: The door closing device limits the vertical headroom clearance to less than 80 inches in height and protrudes into the primary path of travel.

Alternative Rec: *
(Where Available)



Girls Restroom Building E

Full Rec Replace the door closing device with a device that fits above the door casing and does not protrude into the primary path of travel.

Citation: CBC 1121B.2; ADAAG 4.4.2

Minimum Quantity:	1
Maximum Quantity:	1
Unit:	Each
Minimum Estimated Cost:	308
Maximum Estimated Cost:	308
Record Number	246
Priority:	

Restrooms

Finding: There is 4 inches of clearance on the latch side of the entrance door to the restroom from the push side.

Alternative Rec: *
(Where Available)



Girls Restroom Building E

Full Rec Provide at least 12 inches of latch side clearance at the entrance door to the restroom from the push side (see ADAAG 4.13.6 and Figure 25). Otherwise, install an automatic door opening device to the primary entrance complying with ADAAG 4.13.12 and ANSI/BHMA A156.10, 1985, standards.

Citation: ADAAG 4.13.6

Minimum Quantity:	1
Maximum Quantity:	1
Unit:	Each
Minimum Estimated Cost:	1921
Maximum Estimated Cost:	0
Record Number	247
Priority:	

Facility Name: James Monroe High School

Restrooms

Finding: The pipes under the lavatory in the restroom do not provide protection against contact.

Alternative Rec: *
Rec:
(Where Available)



Girls Restroom Building E

Citation:	ADAAG 4.19.4
Minimum Quantity:	1
Maximum Quantity:	1
Unit:	Each
Minimum Estimated Cost:	39
Maximum Estimated Cost:	39
Record Number	248
Priority:	

Full Rec Insulate or otherwise configure pipes under the lavatory designated to be accessible in the restroom to protect against contact (see ADAAG 4.19.4). Make certain there are no sharp or abrasive surfaces under the lavatory.

Restrooms

Finding: The bottom edge of the reflecting surface of the mirror in the restroom is 47 inches above the finished floor.

Alternative Rec: *
Rec:
(Where Available)



Girls Restroom Building E

Citation:	ADAAG A4.19.6; CBC 1115B.9.1.2; ADAAG 4.19.6
Minimum Quantity:	1
Maximum Quantity:	1
Unit:	Each
Minimum Estimated Cost:	291
Maximum Estimated Cost:	291
Record Number	249
Priority:	

Full Rec Lower the mirror in the restroom so that the bottom edge of the reflecting surface is no higher than 40 inches above the finished floor and the topmost portion of the reflecting surface extends at least 74 inches above the finished floor (see ADAAG A4.19.6). A single, full-length mirror is recommended since it can accommodate all people. Make certain to provide a minimum clear floor space in front of the mirror of 30 inches in width and 48 inches in length.

Facility Name: James Monroe High School

Restrooms

Finding: There is insufficient clear floor space in the stall designated to be accessible in the restroom. The door to the stall designated to be accessible in the restroom does not close automatically or have accessible hardware.

Alternative Rec: *
(Where Available)



Girls Restroom Building E

Full Rec Modify or replace the stall designated to be accessible in the restroom so that it complies with ADAAG 4.17.3, CBC 1115B and CBC Figures 11B-1A and 1B. Standard accessible stalls require 60 inches in width with 56 inches depth for wall-mounted toilets or 59 inches depth for floor-mounted toilets to accommodate individuals in wheelchairs. The minimum width of a front-approach doorway shall provide at least 32 inches and a side-approach doorway shall provide at least 34 inches. The door shall swing outward, close automatically and provide accessible hardware.

Citation: CBC 1115B; ADAAG 4.17.3; ADAAG A4.17.3

Minimum Quantity:	1
Maximum Quantity:	1
Unit:	Each
Minimum Estimated Cost:	4000
Maximum Estimated Cost:	4000
Record Number	250
Priority:	

Restrooms

Finding: The height of the side grab bar in the stall designated to be accessible of the restroom is 33 1/4 inches above the finished floor. The side grab bar in the stall designated to be accessible in the restroom does not extend 54 inches from the back wall.

Alternative Rec: *
(Where Available)



Girls Restroom Building E

Full Rec Remount the side grab bar in the stall designated to be accessible in the restroom so that the height of the gripping surface is centered at 33 inches above finished floor. The front end of the grab bar shall extend at least 54 inches from the back wall and the back end of the grab bar shall be mounted within 12 inches from the back wall. Grab bars must be able to support a point load of at least 250 pounds and shall be less than the allowable shear stress of the grab bar material.

Citation: CBC 1115B.8.1; ADAAG 4.26

Minimum Quantity:	1
Maximum Quantity:	1
Unit:	Each
Minimum Estimated Cost:	448
Maximum Estimated Cost:	448
Record Number	251
Priority:	

Facility Name: James Monroe High School

Restrooms

Finding: The height of the toilet seat in the stall designated to be accessible in the restroom is 16 inches above the finished floor.

Alternative Rec: *
Rec:
(Where Available)



Girls Restroom Building E

Full Rec Remove or modify the toilet in the stall designated to be accessible in the restroom so that the seat height is between 17 inches and 19 inches above the finished floor (see ADAAG 4.16.3).

Citation: ADAAG 4.16.3

Minimum Quantity:	1
Maximum Quantity:	1
Unit:	Each
Minimum Estimated Cost:	1707
Maximum Estimated Cost:	1707
Record Number	252
Priority:	

Restrooms

Finding: The toilet paper dispenser in the stall designated to be accessible in the restroom interferes with the use of the side grab bar.

Alternative Rec: *
Rec:
(Where Available)



Girls Restroom Building E

Full Rec Remount the toilet paper dispenser in the stall designated to be accessible in the restroom so that it does not interfere with the use of the side grab bar (see ADAAG 4.16.6 and Figure 29(b)). Toilet paper dispensers must allow continuous paper flow.

Citation: CBC 1115B.9.3; ADAAG 4.16.6

Minimum Quantity:	1
Maximum Quantity:	1
Unit:	Each
Minimum Estimated Cost:	277
Maximum Estimated Cost:	277
Record Number	253
Priority:	

Facility Name: James Monroe High School

Restrooms

Finding: The distance from the center of the toilet to the nearest side wall in the stall designated to be accessible in the restroom is 21 1/2 inches.

Alternative Rec: *
(Where Available)



Girls Restroom Building E

Full Rec Relocate the toilet or stall side wall so that the distance from the centerline of the toilet to the nearest side wall in the stall designated to be accessible in the restroom is exactly 18 inches (see ADAAG Figure 28).

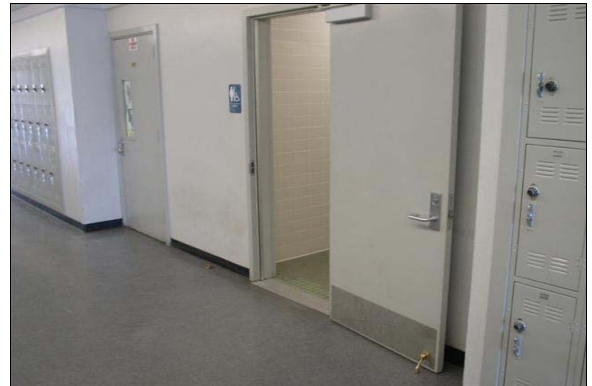
Citation: CBC 1115B.7.1.3 ADAAG 4.17.3

Minimum Quantity:	1
Maximum Quantity:	1
Unit:	Each
Minimum Estimated Cost:	1143
Maximum Estimated Cost:	1143
Record Number	254
Priority:	

Restrooms

Finding: There is signage indicating accessibility on the entry door to the restroom. The signage is centered 60 inches above the floor on the latch side of the entrance door and includes Braille and raised lettering, gender use symbol and the ISA symbol.

Alternative Rec: *
(Where Available)



Girls Restroom Building T

Full Rec The restroom is designated accessible and should be made an accessible restroom for the facility. Monitor signage for continued compliance with CBC 1115B.5, ADAAG 4.1.2(7) and ADAAG 4.1.6(3)(e) and ADAAG 4.30.

Citation: CBC 1115B.5; ADAAG 4.1.6; ADAAG 4.1.2(7); ADAAG 4.1.6(3)(e); ADAAG 4.30

Minimum Quantity:	1
Maximum Quantity:	1
Unit:	None Selected
Minimum Estimated Cost:	0
Maximum Estimated Cost:	0
Record Number	268
Priority:	

Facility Name: James Monroe High School

Restrooms

Finding: The bottom 10 inches of the door does not provide a smooth, uninterrupted surface, or panel to allow the door to be opened by a wheelchair footrest without creating a trap or hazardous condition, due to a doorstop.

Alternative Rec: *
(Where Available)



Girls Restroom Building T

Full Rec Remove the doorstop from the door to provide a smooth, uninterrupted surface for the bottom 10 inches of the door.

Citation: CBC 1133B.2.6

Minimum Quantity:	1
Maximum Quantity:	1
Unit:	Custom
Minimum Estimated Cost:	0
Maximum Estimated Cost:	0
Record Number	269
Priority:	

Restrooms

Finding: The door in the standard stall designated to be accessible in the restroom does not have appropriate accessible hardware.

Alternative Rec: *
(Where Available)



Girls Restroom Building T

Full Rec Install a loop or U-shaped handle immediately below the latch hardware on the door to the stall designated to be accessible in the restroom (see CBC 1115B.7.1.3 and ADAAG 4.13.9). Lever-operated or push-type mechanisms may also be used. The latch shall be flip-over style, sliding or other hardware not requiring grasping or twisting.

Citation: CBC 1115B.7.1.3; ADAAG 4.13.9

Minimum Quantity:	1
Maximum Quantity:	1
Unit:	Each
Minimum Estimated Cost:	189
Maximum Estimated Cost:	189
Record Number	270
Priority:	

Facility Name: James Monroe High School

Restrooms

Finding: The distance from the center of the toilet to the nearest side wall in the standard stall designated to be accessible in the restroom is 17 1/2 inches.

Alternative Rec: *
(Where Available)



Girls Restroom Building T

Full Rec Relocate the toilet or stall side wall so that the distance from the centerline of the toilet to the nearest side wall in the stall designated to be accessible in the restroom is exactly 18 inches (see ADAAG Figure 28).

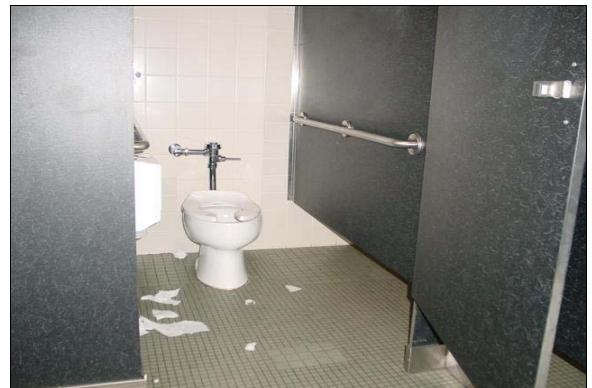
Citation: CBC 1115B.7.1.3 ADAAG 4.17.3

Minimum Quantity:	1
Maximum Quantity:	1
Unit:	Each
Minimum Estimated Cost:	1143
Maximum Estimated Cost:	1143
Record Number	271
Priority:	

Restrooms

Finding: The door in the alternate stall designated to be accessible in the restroom does not have appropriate accessible hardware.

Alternative Rec: *
(Where Available)



Girls Restroom Building T

Full Rec Install a loop or U-shaped handle immediately below the latch hardware on the door to the stall designated to be accessible in the restroom (see CBC 1115B.7.1.3 and ADAAG 4.13.9). Lever-operated or push-type mechanisms may also be used. The latch shall be flip-over style, sliding or other hardware not requiring grasping or twisting.

Citation: CBC 1115B.7.1.3; ADAAG 4.13.9

Minimum Quantity:	1
Maximum Quantity:	1
Unit:	Each
Minimum Estimated Cost:	189
Maximum Estimated Cost:	189
Record Number	272
Priority:	

Facility Name: James Monroe High School

Emergency Warning Systems

Finding: The facility shall have a fire and life safety emergency plan approved by the local building official that specifically addresses the evacuation of individuals with disabilities.

Alternative Rec: *
(Where Available)



Full Rec A fire and life safety emergency plan that specifically addresses the evacuation of individuals with disabilities must be approved by local building officials and the state fire official and comply with CFC Part 9 and CBC 1114B.2 for areas of rescue assistance.

Citation: CFC Part 9 & CBC 1114B.2

Minimum Quantity: 1
Maximum Quantity: 1
Unit: None Selected
Minimum Estimated Cost: 0
Maximum Estimated Cost: 0
Record Number 286
Priority:

Emergency Warning Systems

Finding: There are no visual warning devices in common areas of the facility.

Alternative Rec: Altering a facility's programs, or addressing higher priority barriers can reduce or eliminate the need for an area of rescue assistance, such as making certain that an individual with a disability participates in programs located near an already accessible exit. Otherwise creating an accessible exit can provide an acceptable alternative to providing an area of rescue assistance.
(Where Available)



Full Rec Install visual warning devices integrated with the facility's alarm system complying with CBC 1114B.2.5, ADAAG 4.1.3(14) and ADAAG 4.28 in all common areas such as hallways, general use rooms, and in accessible restrooms and other accessible rooms.

Citation: CBC 1114B.2.4; ADAAG 4.1.3(14); ADAAG 4.28

Minimum Quantity: 1
Maximum Quantity: 1
Unit: None Selected
Minimum Estimated Cost: 0
Maximum Estimated Cost: 288
Record Number 287
Priority: